



Community Development and Wellbeing Committee

Notice of Meeting

A meeting of the Community Development and Wellbeing Committee will be held in the Council Chamber, 156 High Street, Dannevirke on **Wednesday 6 August 2025** commencing at **1:00 pm**.

Bryan Nicholson
Chief Executive

Agenda

- 1. Welcome and Meeting Opening**
- 2. Apologies**
- 3. Public Forum**

A period of up to 30 minutes shall be set aside for a public forum. Each speaker during the public forum section of a meeting may speak for up to five minutes.

Standing Orders may be suspended on a vote of three-quarters of those present to extend the period of public participation or the period any speaker is allowed to speak.

With the permission of the Chairperson, members may ask questions of speakers during the period reserved for public forum. If permitted by the Chairperson, questions by members are to be confined to obtaining information or clarification on matters raised by the speaker.

3.1 Presentation - Sheryll Hoera, Tararua Health Group

Sheryll Hoera, General Manager for Tararua Health Group will be in attendance alongside her management team to talk to the Committee.

Tararua Health Group provides primary healthcare services to the large rural district of Tararua offering a range of medical services including general practice,

maternity care, and women's and men's health. They have multiple locations including Dannevirke, Pahiatua and Norsewood.

3.2 Presentation - Te Kete Hauora o Rangitāne

Mahalia Paewai, Manager from Te Kete Hauora o Rangitāne/Rangitāne o Tamaki nui-a-rua will be in attendance to provide an update to the Committee.

Te Kete Hauora o Rangitāne operates within a Kaupapa Māori framework that encompasses a holistic approach to health and wellbeing.

4. Notification of Items Not on the Agenda

Major items not on the agenda may be dealt with at this meeting if so resolved by the Committee and the Chairperson explains at the meeting at a time when it is open to the public the reason why the item was not listed on the agenda and the reason why discussion of the item cannot be delayed until a subsequent meeting.

Minor matters not on the agenda relating to the general business of the Committee may be discussed if the Chairperson explains at the beginning of the meeting, at a time when it is open to the public, that the item will be discussed at that meeting, but no resolution, decision or recommendation may be made in respect of that item except to refer it to a subsequent meeting.

5. Declarations of Conflicts of Interest in Relation to this Meeting's Items of Business

6. Confirmation of Minutes

5

Recommendation

That the minutes of the Community Development and Wellbeing Committee meeting held on 4 June 2025 (as circulated) be confirmed as a true and accurate record of the meeting.

7. Reports

7.1 Sport Tararua Twelve Month Report to June 2025 **11**

7.2 Bush Multisports Trust Annual Report 2025 **41**

7.3 Management Report **63**

8. Valedictory Address

Address from Retiring Councillor Alison Franklin

9. Items not on the Agenda

10. Closure



Community Development and Wellbeing Committee

Minutes of a meeting of the Community Development and Wellbeing Committee held in the Council Chamber, 156 High Street, Dannevirke on Wednesday 4 June 2025 commencing at 1:00 pm.

1. Present

Cr S M Gilmore (Chairperson), Her Worship the Mayor - Mrs T H Collis, Crs E L Peeti-Webber (Deputy Mayor) (via Teams), N L Chase, P A Johns, K A Sutherland, S A Wallace, A K Franklin (via Teams) and S M Wards

In Attendance

Mr B Nicholson	- Chief Executive
Mrs K Tani	- Group Manager – Strategy and Information
Ms S Lowe	- Group Manager – People, Capability and Customer Experience
Mr K van der Oord	- Communications Team Manager
Ms Z Brighthouse	- Human Resources Business Partner
Ms F Chase	- Manager - Facilities
Mrs S Anthony	- Democracy Support Officer

2. Welcome and Meeting Opening

Cr Naioma Chase opened the meeting with a karakia.

3. Apologies

That the apology from Councillor M Long be accepted, and leave of absence granted from the meeting.

Gilmore/Collis

Carried

4. Public Forum

4.1 Hato Hone St John

Gareth Collings, Area Operations Manager, MidCentral of Hato Hone St John was in attendance. He gave a presentation and spoke about the Hato Hone St John

service and how it services the Tararua District. He provided an overview of the organisation including highly trained personnel, specialty fleet vehicles, and services provided, noting that he covers the MidCentral region in his role, which is the second busiest region after Christchurch and outside of Auckland, and has many challenges such as large roading systems and complicated geography, and communication black spots where connectivity is unavailable. He spoke about the challenges of having a lack of volunteers to sufficiently resource the service and of having a single hospital for the region and of the region being split by the Ruahine and Tararua ranges, and acknowledged that the new highway would improve the ease of access and travel time once opened. The aging population and higher level of deprivation contributed to higher need for services. He described the valuable relationships the organisation has with other emergency services and how they support each other. He advised that while an ambulance may be stationed in a specific district, it can be dispatched to another district if required due to limited resources, and the dispatchers are the deciders of where staff are dispatched to.

A question was asked about the policy for dispatching a helicopter to remote rural areas and Gareth advised that there is set criteria including acuity of patient and nearest other resource. He noted that the dispatchers do not necessarily understand the geography of the Tararua District and he is working continuously to inform them for better understanding.

A concern was raised regarding the Woodville Ambulance Station and the impact once Pahiatua Station was complete and what the cost would be to run an extra ambulance to keep the Woodville site going, and it was advised that Hato Hone St John did not own the Woodville building so this could not be sustained, and the cost of a new ambulance is approximately \$300,000.00 and requires 8 staff to run the service for day shifts only.

4.2 Te Kahu Hauora

Tania Chamberlain, Chief Operations Officer for Te Kahu Hauora was in attendance, she spoke of the long term vision for Ngāti Kahungunu ki Tāmaki-nui-a-Rua to establish a GP practice and when Iwi were approached by clinicians who were leaving area, they realised they had to establish a clinic quickly. She advised that the practice receives no funding and is currently supported by Iwi until it is able to this pay back and be self-sustainable. She raised the concern that space in the current building will be an issue in the future for the practice as they continue to receive staff requests to join the practice and as more patients enrol.

Tania provided an overview of the Hauora services offered and the wrap around care the hub provides that works well in action, and the future focus to mobilise GP and Nurse-Led services to provide access to rural areas. Their model of care is attracting interest from Te Whatu Ora and other large practices due to its success. She advised she is a member of the Hauora Taiwhenua Rural Health Network and

has been asked to do presentations on the Tararua model of care.

She spoke of the concerns regarding funding, smaller practices will not benefit from flexible funding but they will be working with THINK Hauora around this.

A question was asked regarding after hours collaboration with other providers with the recent budget announcement offering additional after hours funding and where will this be utilised in Tararua. Tania responded that she is communicating with Te Whatu Ora on this and at this stage there is not a lot of information available. Te Whatu Ora are moving quickly to establish new sites and Dannevirke is down the list for 2027; she is advocating to ensure fairness in distribution of funds and to encourage services and practices work together. She noted that the Iwi focus with this service has always been to support the entire Tararua community.

The Committee acknowledged the great work and service that is provided to the community and encouraged her to reach out and work with Council for support as the practice grows. It was noted that Tania will be invited back to a future meeting to speak more about the Hauora services offered by Te Kahu Hauora.

5. Presentation

5.1 Presentation – Update on Te Pae Oranga o Ruahine o Tararua Iwi Māori Partnership Board Community Health Plan

Naomi Manu, Chief Executive of Te Pae Oranga o Ruahine o Tararua Iwi Māori Partnership Board was in attendance and provided an overview of the Partnership and the roles and responsibilities it held, and noted it represents seven Iwi in the region to ensure collective impact and drive services for the community. She noted the importance of reporting, monitoring, evidence and policy to identify areas of need and possible solutions; where to utilise skills already existing to scale up services.

Naomi advised that Health New Zealand developed the Regional Health plan for the Ikaroa (Central) Region where the whole population project determines funding received and they are working to integrate the Community Health Plan into the Regional Health Plan.

A question was asked regarding which are the priority areas of health concern for Tararua. Naomi advised that 3 areas were identified: mokopuna ora, oral health and reduction in family harm, although new and emerging priorities are now surfacing since the community plan was created last year, and a specific monitoring programme will be put in place to identify the priorities with the view to integrate with Health New Zealand's Regional Health Plan from 1 July 2025 when there will be an opportunity to have a seat at the table to address the priorities for the district.

The meeting adjourned at 2:32pm and resumed at 2:47pm.

6. Confirmation of Minutes

That the minutes of the Community Development and Wellbeing Committee meeting held on 2 April 2025 (as circulated) be confirmed as a true and accurate record of the meeting.

Wallace/Wards

Carried

7. Notification of Items Not on the Agenda

Nil

8. Declarations of Conflicts of Interest in Relation to this Meeting's Items of Business

Nil

9. Reports

9.1 Management Report

The Community Development and Wellbeing Committee considered the report of the Group Manager – Strategy and Community Wellbeing dated 14 May 2025 that provided an update on key activities and items of interest over the period since the last report to the committee. It was noted that a new format was implemented for the report with a high level focus.

The Communications Team Manager noted that the large number of consultations, 7 in total, had put pressure of the Communications team. He expressed concern regarding the low level of community engagement during consultations and advised that the team were investigating solutions along with the Community Engagement Officer. He noted that the current priority is the local elections. There is a need to build trust and transparency with the community, the communications survey is currently being undertaken and this will inform the direction including incorporating feedback received from the last survey.

A question was asked if there is a process to manage risk regarding social media misinformation and it was responded that capacity is limited to manage social media full time and some topics that arise require higher level sign off or advice from subject matter experts which can slow the process down.

The Manager – Facilities spoke to the Facilities report. A concern was raised regarding the district tree register and it was requested that more information about this is brought to a future meeting to provide clarity and direction.

The Group Manager – People, Capability and Customer Experience spoke to the Customer Service and Libraries report. A concern was raised regarding the

Woodville I-site lunch time closure and the need to remain open to the public. It was responded that a full review will be undertaken; there are some challenges with the layout of the premises making it difficult for staff to monitor both areas, but this is being reviewed. It was advised that further processes for reporting and monitoring of sites will be implemented and data captured and brought back to the meeting.

The committee complimented the new reporting format as easy to read and containing a great level of information.

That the report from the Group Manager - Strategy and Community Wellbeing dated 14 May 2025 concerning the Management Report be received.

Johns/Collis

Carried

10. Items not on the Agenda

Nil

Cr S Wards closed the meeting with a karakia.

There being no further business the Chairperson thanked those present for their attendance and contributions, and declared the meeting closed at 3:47pm.

Chairperson



Report

Date : 29 July 2025

To : Chairperson and Committee Members
Community Development and Wellbeing Committee

From : Allie Dunn
Manager - Democracy Services

Subject : **Sport Tararua Twelve Month Report to June 2025**

Item No : **7.1**

1. Recommendation

- 1.1 *That the report from the Manager - Democracy Services dated 24 July 2025 concerning the Sport Tararua Twelve Month Report to June 2025 be received.*

2. Reason for the Report

- 2.1 To present for consideration the Sport Tararua Annual Report for the period ending 30 June 2025, as required by the Sport Tararua and Tararua District Council contract.

3. Background

- 3.1 The role of Sport Tararua is to support the Council achieve its aspiration of having a connected, vibrant, and thriving Tararua district, through the mediums of play, recreation, and sport.
- 3.2 The Tararua District Council has an agreement with Sport Manawātū Charitable Trust for the provision of sport and physical activity services and programmes for the Tararua district. This service is delivered locally under the mantle of Sport Tararua. The term of the current contract is from 1 July 2020 to 30 June 2025 with the agreement allowing both parties to review annual service outcomes to ensure they reflect each organisation's goals whilst also being relevant to the district and community it services.

- 3.3 The contract requires that Sport Manawatū deliver six-monthly and annual reports to reflect progress made against the annual work plan and the deliverables of the contract. The Annual Report for the previous financial was received by the Community Development and Wellbeing Committee on 4 September 2024.
- 3.4 Sport Manawatū have delivered their annual report (attached) against the contract covering the period 1 July 2024 to 30 June 2025. This update presents Sport Tararua achievements in the Tararua District during the past 12-months.
- 3.5 Representatives from Sport Manawatū will be in attendance at this meeting to speak to their report.

4. Community Engagement

- 4.1 There are no community engagement requirements associated with this matter.

5. Statutory Requirements

- 5.1 There are no statutory requirements associated with this matter.

6. Delegations

- 6.1 The Community Development and Wellbeing Committee has authority to receive reports from Sport Tararua.

7. Conclusion

- 7.1 The Annual Report covering progress made against the annual work plan and deliverables of the contract for the period ending 30 June 2025 is ready to be presented to the committee for receipt and noting.

Attachments

- 1 [!\[\]\(f2c2c2dbb0d10a8fdb824f6853376b23_img.jpg\)](#). ST Report - July 2024 - June 2025



INTRODUCTION

Sport Manawatu’s role is to support the Council to achieve its aspiration of having a connected, vibrant, and thriving district through the mediums of Play, Recreation, and Sport through our satellite office of Sport Tararua.



This report presents Sport Tararua’s achievements in the Tararua District during the period 01 July 2024 to 30 June 2025.

Key areas that we focused on:

- The Tararua district exceeds the national average for physical activity, with a particular focus on the low participation groups.
- The community understands the value of Play.
- Everyone is encouraged to be active by playing and being active in sports and the recreation facilities across the district. Active recreation and community events create social opportunities and contribute to Hauora.

**Agreed service outcomes for
July 2024 - June 2025**

- 1** The Tararua District exceeds the national average for physical activity, with a particular focus on low participation groups.
- 2** The community understands and values Play.
- 3** Everyone is encouraged to be active by playing and being active in sport and recreation facilities across the district.
- 4** Active recreation and community events create social opportunities and contribute to Hauora.

SUMMARY OF ACTIVITY OVER THE PERIOD
1 July 2024 – 30 June 2025

	JUL 24	AUG 24	SEP 24	OCT 24	NOV 24	DEC 24	JAN 25	FEB 25	MAR 25	APR 25	MAY 25	JUN 25
Taranua 7 Aside Tournament												
Voice of the Coach Survey												
Play Week 2024												
Keppy Uppy Play Week Challenge												
Support on the Sides												
Race to the Brewery												
Taranua College Athletics and Swimming Sports												
See Her Be Her												
Te Kete Hauora Rangitane Haurua Day - Dannevirke												
Taranua Sports Awards												
Untamed Play Hui												
Children's Day Pahiatua												
Secondary School Student Coach/Official Development Day												
Taranua Sprint Duathlon												
Taranua Ripa Tournament												
Rural Travel Fund												
Junior Indoor Bowls												
Workplace Challenge												
Voice of Rangatahi Survey												
Taranua College at Risk Youth Programme (Tu Tangata)												
Taranua College Colour Run												
New Zealand's National Volunteer Week (Te Wiki Tuao a-Motu)												
Play, Parent Coach Workshop - Pahiatua												
Green Prescription												

THE TARARUA DISTRICT EXCEEDS THE NATIONAL AVERAGE FOR PHYSICAL ACTIVITY, WITH A FOCUS ON LOW PARTICIPATION GROUPS.

Celebrating Local Legends at the 2025 Tararua Sports Awards

The 2025 Tararua Sports Awards brought together around 150 people in Dannevirke to celebrate the incredible talent and commitment within our sporting community. The night recognised athletes, coaches, volunteers, and clubs who are making a difference in the district.

A highlight of the evening was the presentation of the Sportsperson of the Year award to David Bulick for his outstanding achievements in shearing. David's story of returning to top-level competition after a serious farm accident was both moving and inspiring. As guest speaker, he took part in a Q&A with emcees Gareth and Sarah from More FM, sharing what motivates him and how he overcame setbacks.

More than just an awards night, the event showed how sport brings people together, builds confidence in our young people, and strengthens community pride. Local councillors and well-known faces joined the celebrations, making it a truly special occasion.



Award winners

- Bush Telegraph Administrator/Volunteer of the Year**
 - Highly Commended: Michelle Rankin (Rugby)
 - Winner: Melanie Bolton (Netball)
- MCI & Associates Official of the Year**
 - Winner: Simon Walker (Rowing)
- Activate Gym Community Active Recreation and Play Initiative of the Year**
 - Winner: Brianna Martin
- Sport Manawatu Tararua Inclusion Award**
 - Winner: Tararua Riding for the Disabled (Equestrian)
- AON Coach of the Year**
 - Winner: Kaiya Hātana Butcher (Swimming)
- Property Brokers Team of the Year**
 - Highly Commended: Dannevirke Under 12's Kotiro Rugby League Team
 - Winner: 3 Stand World Record Breaking Shearing Team
- Visique Optometrists Club of the Year**
 - Winner: Tararua Riding for the Disabled (Equestrian)
- Scanpower Junior Sportsman of the Year**
 - Highly Commended: Brodie Bennett (Squash)
 - Winner: Connor Anderson (Boxing)
- Rangitāne o Tamaki nui-ā-Rua Junior Sportswoman of the Year**
 - Highly Commended: Emma Bendall (Swimming)
 - Winner: Jodie Kent (Hockey)

THE TARARUA DISTRICT EXCEEDS THE NATIONAL AVERAGE FOR PHYSICAL ACTIVITY, WITH A FOCUS ON LOW PARTICIPATION GROUPS.

Rippa Rugby Tournament a Win for Tamariki and Community Spirit

The annual Tararua Rippa Rugby Tournament, held at the Bush Multisport Complex in Pahiatua, brought tamariki together for a fun, active day of sport and teamwork.

Despite heavy rain, the event went ahead indoors thanks to the flexibility of the venue and some quick thinking from organisers. The stadium provided a safe and well-equipped space, allowing the tournament to run smoothly despite the weather.

Schools taking part included Pahiatua, Huia Range, Combined Rural Schools, and Woodville. Run in partnership with Sport Tararua and Manawatu Rugby, the day gave tamariki a chance to build confidence, learn new skills, and experience the power of sport in a positive, supportive environment.

This event showed the importance of quality community facilities and the value of sport in helping young people grow, stay active, and feel connected.



Backing Tararua College Students to Thrive Through Sport and Play

In response to a community hui led by Tararua College, where the school shared some of the challenges students were facing, local agencies, including Sport Manawatu, were invited to explore ways to help.

Following the hui, our Tararua Community Connector brought the opportunity back to the team. From there, staff from across our Rangatahi, Active Teens, Regional Sports Director, and Diversity, Equity and Inclusion teams met with the college leadership to understand how we could support their students.

We then connected directly with students who had been identified as needing extra support. Through those conversations, we've started designing a tailored programme shaped by what the students enjoy and what helps them feel confident and connected.

At the same time, we worked with another group of students keen to lead lunchtime activities. That session saw 21 students step forward to help organise games and activities, each choosing something they're excited to run. Our Community Connector will support them on-site each week.

Both initiatives will launch in Term Three and reflect a shared commitment to helping young people feel seen, supported, and empowered through active opportunities.

THE TARARUA DISTRICT EXCEEDS THE NATIONAL AVERAGE FOR PHYSICAL ACTIVITY, WITH A FOCUS ON LOW PARTICIPATION GROUPS.

New Duathlon Event Gets Tamariki Moving

The first-ever Taranua Duathlon was held at Bush Multisport on 9 April, giving local tamariki a fun and active way to connect through sport.

Jointly run by Sport Taranua and Pahiatua School with support from Taranua College students as volunteer marshals the event was a great example of local teamwork and community spirit.

Fifty children took part, running and biking their way through a supportive, low-pressure course. The event helped grow confidence and resilience, while reinforcing the value of play and physical activity in everyday life. Fonterra added to the fun by providing a milk drink for each participant, showing how partnerships can help support wellbeing in our communities.

Positive feedback poured in from parents and schools, with one caregiver sharing, “Casey was still talking about it at bedtime... he kept saying how proud of himself he was!” Others loved the relaxed “turn up and have a go” vibe, the focus on fun, and that it was a free event.

The success of this inaugural event has sparked plans for another in October/November, with hopes of reaching even more tamariki. It’s a great example of how simple, welcoming events can remove barriers and help more young people be active in their local communities.



THE TARARUA DISTRICT EXCEEDS THE NATIONAL AVERAGE FOR PHYSICAL ACTIVITY, WITH A FOCUS ON LOW PARTICIPATION GROUPS.

Tararua 7s Tournament

On 7th August 2024, the 13th annual Tararua 7s Tournament was held at Bush Multisport Park in Pahiatua. This tournament is a key event in the district's sports calendar, bringing together schools from across the region for a day of competitive sport, community engagement, and youth development.

The Tararua 7s provides an invaluable opportunity for tamarii and rangatahi to participate in a variety of sports, including rugby, netball, hockey, and football. The event this year saw record participation numbers, with over 650 children from 17 schools across the district taking part. The atmosphere was electric, with 204 games played throughout the day, supported by an impressive team of volunteers and officials.

The success of this year's Tararua 7s was largely due to the collaborative efforts of Sport Tararua, the schools, volunteers, and the wider community.

Special mention goes to the volunteers from Dannevirke High School and Tararua College, who officiated and managed various games throughout the day. Their contributions were critical in the event's success, with the organising team remarking that the tournament could not have run without their support. Their involvement not only helped with the logistics but also gave them a chance to develop leadership and organisational skills.

The event organisers received overwhelmingly positive feedback, with many attendees commenting that this was one of the best Tararua 7s tournaments to date. Participants, teachers, and families praised the day's seamless organisation, the high level of competition, and the positive environment that promoted both sportsmanship and community spirit.

Winning schools by category

- Junior Football: Woodville School
- Senior Football: Huia Range School
- Junior Rugby: Eketāhuna School
- Senior Rugby: St Joseph's School
- Junior Hockey: St Anthony's School
- Senior Hockey: St Anthony's School
- Junior Netball: St Joseph's School
- Senior Netball: Dannevirke South School

Senior Football winners - Huia Range School



THE COMMUNITY UNDERSTANDS AND VALUES PLAY.

Tākaro Tararua Play Trailer Bringing Play to Local Communities

The Tākaro Tararua Play Trailer is helping tamariki across the Tararua District stay active, feel included, and have fun. Jointly delivered by Sport Tararua and Tararua District Council, the trailer is a free, easy-to-book resource filled with play gear for children of all abilities.

By removing barriers like cost and equipment access, the trailer has become a popular feature at events such as Children's Day in Pahiatua and Whānau Ora Day in Dannevirke. Its use is supported by our Tararua Community Connector, who helps bring it to where it's needed most. Schools have embraced the trailer too with one full week of back-to-back bookings showing how valuable it is for encouraging movement and wellbeing during the school day.

The trailer is a great example of local collaboration and brings Sport Tararua's mission to life by making active play more accessible, inclusive, and fun for everyone in the community.



Workshop Empowers Parents and Coaches to Support Young Athletes

On 9 June 2025, Sport Manawatu hosted a free workshop at Bush Multisport to support parents and coaches involved in youth sport. The session focused on practical ways to better connect with tamariki and rangatahi, making sure young people feel supported, included, and valued on and off the field.

It was great to see so many from the community come together to learn, share, and grow. Whether you're on the sidelines or coaching a team, the workshop was a strong reminder of the positive influence adults can have in shaping fun, safe, and confidence-building experiences for young athletes.



THE COMMUNITY UNDERSTANDS AND VALUES PLAY.

Taranua Joins Nationwide Play Week Challenge

On 30 October 2024, the “Keepy Uppy” Play Week challenge brought people of all ages together for a fun, low-pressure activity that celebrated movement and play.

Across the wider region, more than 2,100 people joined in including students from Taranua College, Pahiatua, Norsewood, and Dannevirke South Schools, as well as the team at WaiSplash.

The challenge was simple, fun, and inclusive making it easy for everyone to get involved.

Events like this show how play can spark joy, build connections, and get communities moving without needing a big budget or complex setup.



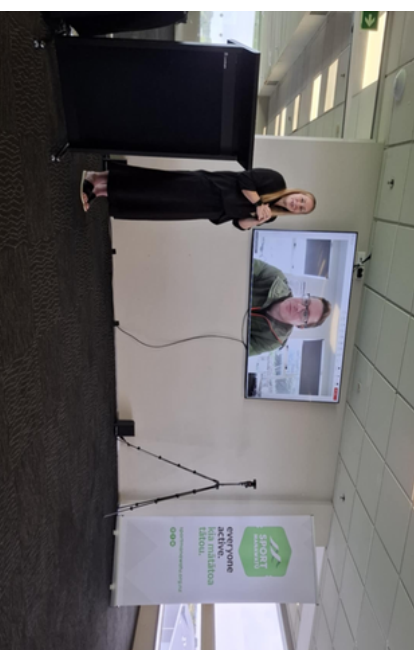
Untamed Play Hui Sparks Regional Collaboration

On 30 October 2025, Sport Manawatu hosted the Untamed Play Hui, bringing together council staff from across the region to explore how we can support more natural, adventurous, and accessible play in our communities.

The hui focused on encouraging risk-taking in play, activating public spaces, and making play more visible and inclusive. Staff from all four territorial authorities attended, including Nigel Shaw from Taranua District Council and our Taranua Community Connector.

The hui received great feedback and helped identify shared priorities and areas where councils want more support. One attendee summed it up by saying, “The event exceeded my expectations... I came away fizzing with enthusiasm!”

A regional play network has since been formed, with a commitment to work together on future play opportunities and initiatives that reflect the needs of our diverse communities.



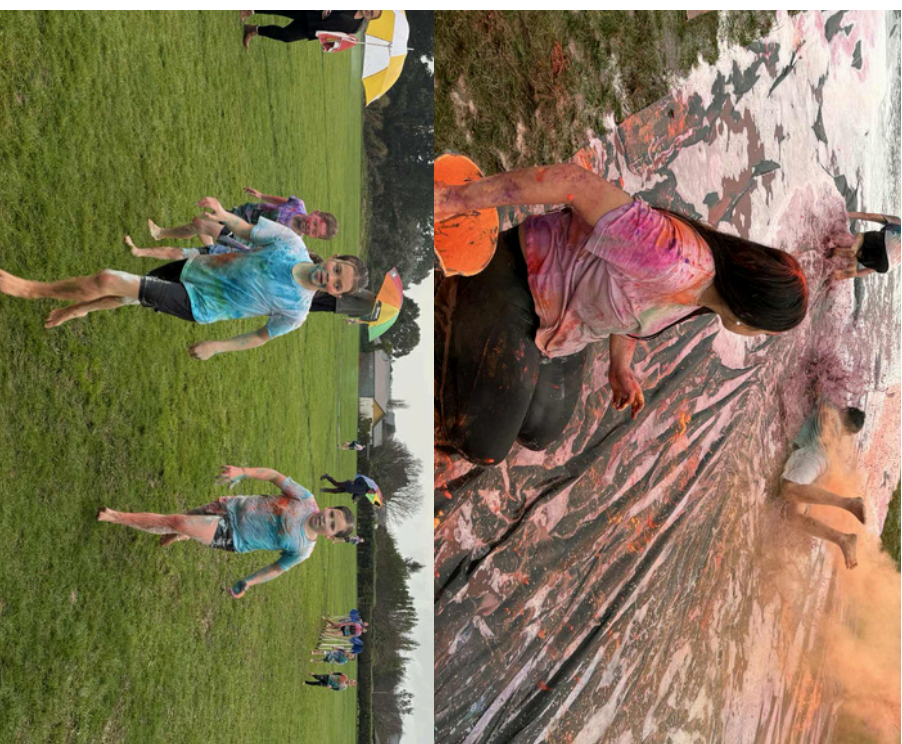
EVERYONE IS ENCOURAGED TO BE ACTIVE BY PLAYING AND BEING ACTIVE IN SPORT AND RECREATION FACILITIES.

Student-Led Colour Run Brings Community Together

On 27 June 2025, Tararua College came alive with colour as 150 students and 100 community members took part in a fun, inclusive Colour Run planned and delivered by two of the school's Health and Wellbeing Leaders.

Supported by Sport Tararua's Community Connector, the students led every part of the event from securing \$1,500 in funding through a successful Tū Manawa application, to working with sponsors, managing volunteers, and promoting the event.

The result was a vibrant, high-energy day that not only encouraged physical activity but also celebrated youth leadership and community connection. The Colour Run showed how empowering young people to take the lead can deliver powerful outcomes for their peers and their wider community.



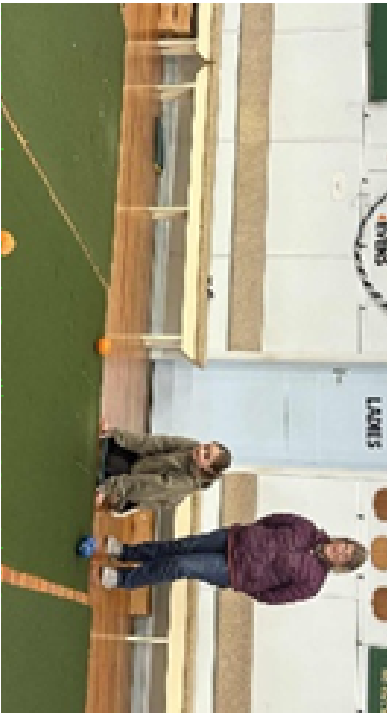
EVERYONE IS ENCOURAGED TO BE ACTIVE BY PLAYING AND BEING ACTIVE IN SPORT AND RECREATION FACILITIES.

Bowls Programme Opens New Doors for Tamariki

In Term 2 2025, the Bush Ruahine Bowling Club teamed up with Sport Tararua to grow participation in their junior indoor bowls programme. While initial numbers were low, targeted promotion and a partnership with Tu Meke began rotating tamariki through the sessions, with six core players now attending regularly. The tamariki have embraced the chance to try something new in a relaxed, supportive environment.

The programme has not only introduced a new generation to bowls, but also created a pathway for young players like the students from Woodville School who will represent their community at the AIMS Games in bowling later this year.

With plans to promote the programme again in Term 4, the club is well placed to keep growing interest and helping more young people discover the joy of sport.



Brianna Martin Shines in See Her Be Her Campaign

In February 2025, we proudly featured Brianna Martin from Pahiatua as part of our See Her Be Her campaign, a social media initiative designed to highlight kōhine (young girls) who are thriving through physical activity.

Brianna, a passionate and relatable Taekwondo athlete, shared her story of personal growth, family connection, and the role sport plays in supporting her mental and physical wellbeing. Her honest reflections on both the highs and the challenges struck a chord with the community, with her videos reaching over 12,000 views across our platforms.

Instead of focusing purely on performance, the campaign spotlighted the positive ripple effects of movement like confidence, connection, and resilience. Brianna's story is a powerful example of how physical activity can support wellbeing in everyday life.

She was also recognised at the Tararua Sports Awards, winning the Community Active Recreation and Play Initiative of the Year for her work running Kickfit and Boxfit classes. Sport Manawatu continues to support Brianna as she inspires others, especially young girls, to get involved in Taekwondo or find a movement style that works for them.



EVERYONE IS ENCOURAGED TO BE ACTIVE BY PLAYING AND BEING ACTIVE IN SPORT AND RECREATION FACILITIES.

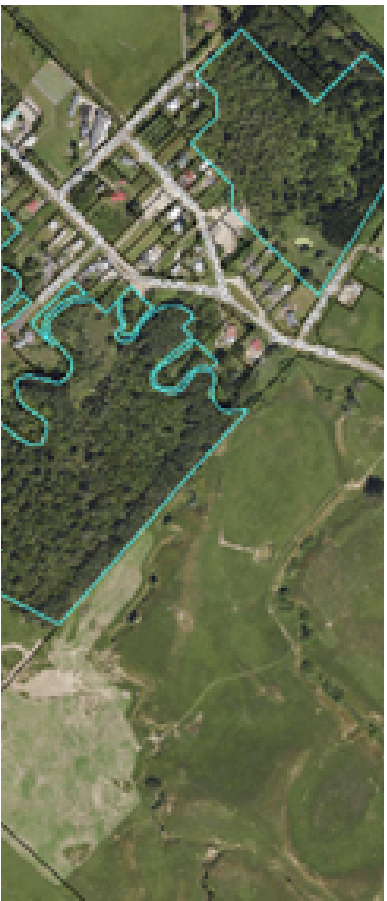
Reviving a Local Bush Walk to Connect Tamariki with Nature

In May 2025, Pongaroa School and local partners began work on an exciting community project to bring an overgrown bush track back to life, just across the road from the school.

Working alongside Pongaroa Way to Go, the Pacific to Puketoi Catchment Group, Sport Tararua, and Tararua District Council, the school is leading efforts to clear the track and turn it into a safe, accessible space where students can explore nature, be active, and connect with the environment as part of their learning.

The Tararua Community Connector is currently supporting the team to apply for Tū Manawa funding, which will help purchase trail markers and signage to enhance safety and learning opportunities.

Still in its early stages, the project is already a great example of how local collaboration can create meaningful outdoor spaces that support student wellbeing and provide tamariki with new ways to move, learn, and thrive.



Building Confidence Through Student Refereeing

On 30 July 2024, 30 students from Dannevirke High School and Tararua College took part in referee development sessions led by Sport Manawātū. Held at each school, the sessions were designed to prepare students to officiate at the upcoming Tararua 7's tournament.

The training focused on building core skills like motivation, clear communication, and confident decision-making; capabilities that support young people both on and off the field.

Feedback was overwhelmingly positive, with 90% of students saying they'd like more opportunities like this. That enthusiasm carried through to game day, where we saw a confident and capable group of student officials contribute to a well-run, enjoyable event for all involved.

This initiative shows the value of investing in youth leadership through sport—and how the right support can empower rangatahi to step up, grow, and lead.

EVERYONE IS ENCOURAGED TO BE ACTIVE BY PLAYING AND BEING ACTIVE IN SPORT AND RECREATION FACILITIES.

Active Teens Programme Boosts Confidence and Skills at Tararua College

In Term 3, we delivered four Active Teens sessions to students in Tararua College's Learning Support Unit, with each session offering a new sport for rangatahi to explore. The programme ran fortnightly from 16 August and involved three to six students each time.

Sports were chosen based on student interest, with sessions covering football, basketball, T-ball, and tennis. Each one followed a simple structure: warm-up, skills practice, and a fun game giving rangatahi the chance to build confidence through movement and learn new techniques using a variety of equipment.

Early on, we noticed some students found it hard to re-engage if they lost interest mid-session. Working with our Healthy Active Learning (HAL) advisor, we adapted the way we delivered the sessions to keep energy levels high and make activities more engaging. The support of the HAL team, including access to MoveWell resources and planning advice, played a key role in lifting both student participation and facilitator capability.

The result is more smiles, more movement, and more moments of success. The Active Teens programme helped students step outside their comfort zone, try something new, and grow their confidence while also strengthening the skills of our own kaimahi.

We'll keep building on this mahi in future terms to ensure every young person has a chance to find joy in movement.



EVERYONE IS ENCOURAGED TO BE ACTIVE BY PLAYING AND BEING ACTIVE IN SPORT AND RECREATION FACILITIES.

Students Step Up at Inter-Secondary School Athletics

On 21 March 2025, the Manawatu Inter-Secondary School Athletics event brought together 561 students from 17 schools across Taranua, Manawatu, Horowhenua, and Palmerston North. The event was co-hosted by Palmerston North Girls' High School and Sport Manawatu, with support from Athletics NZ and attending schools.

Taranua was well represented, with 34 students from Taranua College and 18 from Dannevirke High School taking part—an increase from last year's numbers. The event gave students the chance to compete, build confidence, and connect with peers from across the region.

This steady growth in participation shows the value of providing accessible, inclusive opportunities for rangatahi to challenge themselves and shine on a regional stage.



Taranua Students Take Part in Regional Cross Country

The Manawatu Inter-Secondary School Cross Country event was held on 20 May 2025, hosted by Nga Tawa Diocesan School in partnership with Sport Manawatu and supported by the Feilding Moa Harrier Club.

Over 200 students from 15 schools across the wider region took part. Taranua College and Dannevirke High School were represented by nine students each. While this was a drop from 2024 participation levels, it remains a valuable opportunity for students to challenge themselves and represent their schools in a supportive, regional setting.

We're exploring ways to boost participation in future years and ensure more rangatahi from Taranua have the chance to experience the benefits of events like this—confidence, connection, and a sense of achievement.



EVERYONE IS ENCOURAGED TO BE ACTIVE BY PLAYING AND BEING ACTIVE IN SPORT AND RECREATION FACILITIES.

Students Recognised at Secondary School Sport Champions Awards

On 5 November, the region's top young athletes and leaders were celebrated at the Steve's Tyre Service Manawatu Secondary School Sport Champions 2024, hosted at the Palmy Conference + Function Centre. The awards recognised sporting excellence from across Palmerston North, Manawatu, Horowhenua, and Taranua, with over 75 nominees honoured for their dedication, leadership, and success.

Taranua was well represented, with two local students taking out top honours:

- Liam Brown (Taranua College) was named Male Student Official of the Year for his role in rugby officiating.
- Jazmin Dean (Freyberg High School, residing in Woodville) received Female Student Official of the Year for her work in basketball.

Taranua students also featured as finalists in key categories, including:

- Brodie Bennett (Squash), finalist for Champion Male Student Athlete of the Year
- Dannevirke Small Bore Shooting Team (Dannevirke High School), finalist for Champion Team of the Year

The event was a powerful celebration of youth achievement, highlighting the talent, commitment, and leadership of rangatahi in sport and the strong support they receive from their schools and communities.



EVERYONE IS ENCOURAGED TO BE ACTIVE BY PLAYING AND BEING ACTIVE IN SPORT AND RECREATION FACILITIES.

Coaching and Officiating Skills Take Centre Stage for Tararua Students

On 9 April 2025, we hosted the Secondary School Student Coach/Official Development Day, offering students hands-on training across five major sports: basketball, netball, hockey, football, and, new for this year, volleyball.

Ten students from Tararua College and ten from Dannevirke High School took part, developing their confidence and skills as future coaches and officials. Feedback was overwhelmingly positive, with 82% of all attendees rating the training as beneficial or very beneficial, an increase from 80% in 2024.

This year's programme included changes based on student feedback, such as the addition of an extension module which received a 100% satisfaction score from participants. These changes show how student voice continues to shape and strengthen the programme.

The development day gave rangatahi the tools to lead, support others, and stay involved in sport in new and meaningful ways.

Jess, the Sports Coordinator at Dannevirke High School, asked students to register their interest in umpiring at the Tararua 7 Aside Tournament. This year 35 students put their names forward (this has never happened before) which she attributes to the confidence they gained from the recent Coaching/Umpiring Development Day you held. Unfortunately, due to transport and staff limitations, Jess is only able to bring 11 students on the day, as she doesn't have the means to get the others here.



Coach Survey Shapes Future Support and Development

Between August and October 2024, we ran the Voice of the Coach survey to better understand the needs of local coaches. The survey reached 165 coaches across 23 different sports, 17 of them from the Tararua District, providing valuable baseline data on where support is most needed.

Insights from the survey have already led to action. In 2025, we launched targeted professional development opportunities, including

Inclusive Coaching workshops (attended by five different codes) and a region-wide session focused on coaching teenagers open to both parents and coaches.

This work ensures our support is grounded in the real-world needs of coaches and reflects the voices of those helping to grow and guide our rangatahi through sport.

ACTIVE RECREATION AND COMMUNITY EVENTS CREATE SOCIAL OPPORTUNITIES AND CONTRIBUTE TO HAUORA.

Wai Splash Triathlon a Community Success Story

Held on 9 March 2025, the Wai Splash Triathlon nearly didn't go ahead due to the high cost of traffic management. After a visit from Sport Tararua's Community Connector, the team was encouraged to apply for Tū Manawa funding and successfully received \$3,635 to cover the expense.

With the cost barrier removed, entries quickly flooded in, 96 in total. The event was delivered free of charge to participants and was a huge success, with strong turnout and enthusiastic community feedback.

Steph Duff, Aquatics Manager at Wai Splash, shared:

"Please pass on our absolute gratitude to the team at Sport Manawatu... The feedback has been incredible, and the whole day was such a success! As soon as the cost barrier was removed, the entries flooded in."

This is a great example of how timely support and collaboration can help create accessible, well-run events that bring communities together and get more people moving.



ACTIVE RECREATION AND COMMUNITY EVENTS CREATE SOCIAL OPPORTUNITIES AND CONTRIBUTE TO HAUORA.

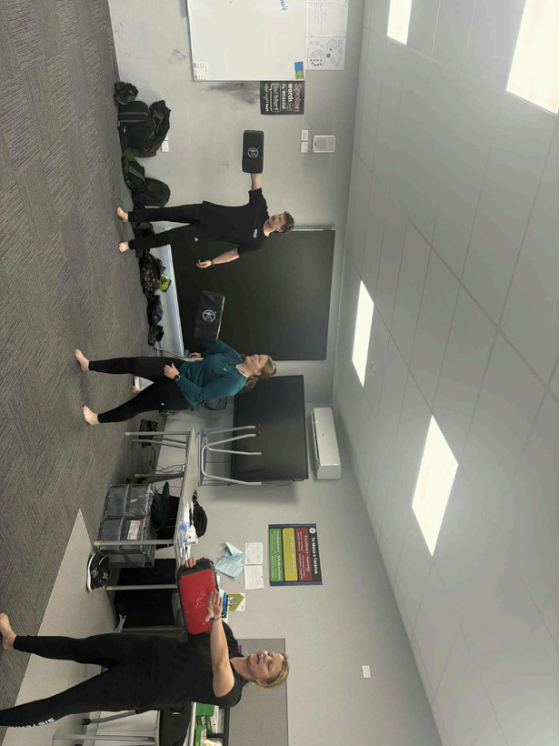
Supporting Rangatahi Through Co-Designed Physical Activity at Tararua College

In response to a challenging period for Tararua College including the tragic loss of a student and a rise in stand-downs, Sport Tararua has partnered with the school to support a group of at-risk rangatahi through a co-designed physical activity programme.

A key first step was listening. Kaimahi worked directly with the students to understand their interests and the barriers they face. These included cost, transport, substance use, and broken relationships, real issues that affect their ability to engage. The students expressed strong interest in outdoor activities like hunting and fishing, as well as boxing, martial arts, gym access, and team sports like basketball and volleyball.

With funding now secured through the Tū Manawa Active Aotearoa Fund, the programme is underway. To end Term 2, local Taekwondo instructor and former student Brianna Martin delivered a session that connected well with the group. In Term 3, Sam Jones from BAMS Boxing in Dannevirke will lead a weekly series of sessions tailored to the students' interests.

Sport Manawatu will continue to support the College and local partners to bring in inspiring role models and deliver activities that reflect the needs and voices of these rangatahi—helping them reconnect through movement, build confidence, and feel supported.



ACTIVE RECREATION AND COMMUNITY EVENTS CREATE
SOCIAL OPPORTUNITIES AND CONTRIBUTE TO HAUORA.

Rural Travel Fund Helping, But Demand
Outpaces Supply

Administered by Sport Tararua on behalf of Tararua District Council, the Sport New Zealand Rural Travel Fund supports young people in rural communities by helping cover the cost of travel to sports competitions and practices. In areas like Tararua, where distances are long and costs are high, this fund plays a vital role in keeping sport accessible.

The current annual fund of \$9,500 is well below what's needed to meet local demand. Dannevirke High School alone faces transport costs of \$36,000 each year to get students to sporting competitions. While the school contributes \$20,000 and has secured \$15,000 from Pub Charity, this still leaves a shortfall. Their knowledge of this small fund request for just \$1,000 from the travel fund highlights how limited the current allocation is ultimately reducing students' ability to participate in sport.

In response we are developing a proposal to an external funding partner to establish a dedicated travel fund for Tararua and Horowhenua. The goal is to reduce barriers and make sure more rural rangatahi can stay involved in the sports they love.

Recipients of the 2025 Rural Travel Fund

ORGANISATION	AMOUNT
Tararua College	\$2,500
Dannevirke Sports Club - Junior hockey	\$500
Bush Junior Hockey	\$250
Dannevirke Sports Club - Junior Football	\$500
Pahiata School	\$200
Dannevirke Tigers R.L.C and Netball	\$2,750
Kumeroa School	\$200
Huia Range School	\$400
Woodville School	\$600
Dannevirke Netball	\$200
Bush Sports Club - Senior Rugby	\$200
Dannevirke High School	\$1,000
Bush Senior Hockey	\$200
Total	\$9,500

ACTIVE RECREATION AND COMMUNITY EVENTS CREATE SOCIAL OPPORTUNITIES AND CONTRIBUTE TO HAUORA.

Tū Manawa Funding Supporting Local Rangatahi

This quarter, two Tū Manawa projects were approved that will benefit tamariki and rangatahi in the Taranua region. Taranua College's "Tū Tangata" received \$10,937 to support at-risk and less active students. The programme is designed to build hauora, strengthen peer relationships, and create a safe, positive, and active space where students feel a sense of belonging. Te Pae Oranga o Taranua o Ruahine's "Te Tāhū Manawa" was awarded \$70,000 to deliver physical activity experiences grounded in Te Ao Māori. This project supports tamariki and rangatahi across multiple regions, including Taranua, and ensures cultural identity is at the heart of participation.

These projects reflect the core goals of Tū Manawa breaking down barriers and creating meaningful opportunities for young people to move, connect, and thrive.

ORGANISATION	AMOUNT	USED FOR
Mangatainoka School	\$1,000.00	Supported sensory play, sand play, mud kitchens and hut building.
Taranua District Council	\$1,000.00	Equipment for the Play Trailer
Dannevirke South School	\$1,000.00	Supported sensory play, sand play, mud kitchens and hut building.
Ballance School	\$739.00	Supported sensory play, sand play, mud kitchens and hut building.
Taranua College	\$10,937.00	Supported the delivery of a Rangatahi co-designed programme to get active
Taranua College - Colour Run	\$1,500.00	Purchased paint for the event
Ngati Kahunguni ki Tamaki Nui a Rua	\$8,154.90	Toi Kopere (The art of darts) Purchase dart boards and installation of lights for a junior darts program.
Dannevirke High School	\$6,024.00	Supported transportation costs for social sport
Taranua Aquatic Community Trust	\$3,635.00	Funds to pay for traffic management cost and provided a free event to the community
Te Kete Hauora o Rangitane	\$10,000.00	Support for the delivery of Rangitāne Wero a-Marae
Taranua Aquatic Community Trust	\$7,650.00	Supported the Water Safety Program for low-income families in the Taranua
Taranua Community Youth Services Charitable Trust	\$8,000.00	Supported the delivery of programmes for Rangatahi Māori at Akitio Beach
Onboard Skate Inc.	\$10,000.00	Supported delivery of skateboarding skills to school children
Total	\$69,639.90	

ACTIVE RECREATION AND COMMUNITY EVENTS CREATE SOCIAL OPPORTUNITIES AND CONTRIBUTE TO HAUORA.

He Oranga Poutama Funding Recipients

The Taranua kaupapa from FY'23-24 (delivered 24-25) were:

Te Kete Hauora – Wero-ā-Marae

Funding: \$10,000

A community event bringing together the Maraе of Tāmaki-nui-a-Rua for a day of competition in both mainstream and Māori sports, including kī-o-rahi and kapa haka. Held at Huia Range School, volunteers from the Manawatu and Taranua regions supported the event by officiating.

Kahungunu ki Tāmaki Nui a Rua – Kaumātua Māra Kai

Funding: \$5,417

A kaupapa focused on supporting Kaumātua in the Tāmaki-nui-a-Rua area to maintain their own māra kai (vegetable gardens). Participants received planter box kits, soil, and seeds, as well as the tools required for ongoing maintenance of their sustainable food source.

Pahiātua School – Kapa Haka in School Programme

Funding: \$4,000

A Kapa Haka programme supported by a local iwi member. The funding covered tutor costs and performance resources for the school's kapa haka group.

Ruahine School – Kapa Haka in School Programme

Funding: \$6,765.40

Similar to Pahiātua School, Ruahine School's kapa haka programme was supported by a local iwi member, with funding allocated for tutor costs and performance resources. Both Pahiātua and Ruahine Schools participated in the Ruahine Kapa Haka Festival on 19th September, with Pahiātua School achieving 1st place overall. Both schools were the only mainstream institutions to receive funding under He Oranga Poutama's kaupapa Māori initiatives, which focus on supporting Māori cultural participation and community engagement.

Helping Communities Access Funding for Sport and Active Spaces

The Sport Manawatu Community Connector continues to receive regular enquiries from schools, groups, and individuals seeking funding support, particularly for rangatahi aiming to achieve at a high level in sport.

A standout example is Brodie Bennett from Pahiātua, who has been selected to represent New Zealand at the World Squash Tournament in Egypt. With a \$10,000 fundraising target, Brodie was supported by the Community Connector to identify suitable grants and submit an application to the Taranua District Council Contestable Fund.

In addition, Sport Manawatu has worked alongside Sam Jones from the Dannevirke Multisports Committee to complete a funding application to the Eastern and Central Community Trust. The goal is to secure support for the development of a new skate park in Dannevirke—an important project for local youth and the wider community.

These efforts reflect Sport Manawatu's ongoing commitment to helping communities reduce barriers, grow local opportunities, and get more people active more often.

ACTIVE RECREATION AND COMMUNITY EVENTS CREATE SOCIAL OPPORTUNITIES AND CONTRIBUTE TO HAUORA.

Working Together: Sport Tararua and Tararua District Council Collaborations

Sport Tararua and Tararua District Council (TDC) have continued to strengthen their partnership through a range of practical, community-focused projects helping to enhance spaces, reduce barriers, and create more opportunities for locals to be active and connected.

Outdoor Seating Rehomed at Bush Multisports

When Bush Multisports Park in Pahiatua identified a need for outdoor seating but struggled to secure funding, Sport Tararua's Community Connector reached out to the Council. Dave Watson (TDC) identified unused seating in storage at the dog pound, which was repurposed and repaired by Bush Multisports caretakers. The refurbished seating is now in place and being enjoyed by spectators at local events, a simple win through local collaboration.

Portable Stage Project Cuts Long-Term Event Costs

As Deputy Chair of Explore Pahiatua, the Community Connector led a successful bid to reduce event costs by securing funding for a shared portable stage. With events previously costing over \$3,000 to hire a stage, the purchase of a portable unit means more local groups, from schools to cultural and dance organisations, can now host performances affordably. The project was funded through a \$9,600 grant from the Eastern and Central Community Trust, with the remaining \$6,000 covered by Explore Pahiatua.

New Riverside Walkway in Development

Stage one of a new community walkway is underway alongside the Mangatainoka River in Pahiatua from the entrance of Tui Street to the Clay rocks and then aiming to get to the Brewery. Led by Explore Pahiatua and supported by the Community Connector, the project will hopefully begin in August 2025 with the clearing of blackberry and reopening of the original path. With strong community backing and local contractors engaged, this project supports active transport, wellbeing, and access to natural spaces.

District-Wide Directory of Play, Active Recreation and Sport

Sport Tararua and TDC are developing a dedicated webpage that will feature a full directory of Play, Active Recreation, and Sport opportunities across the district. The Community Connector is coordinating with Council's IT and Communications teams, and currently gathering permissions from local groups. Once live, the directory will help residents discover local activities and increase participation across all age groups.

Support for Woodville Skate Park Development

Sport Manawatu's General Manager and Tararua Community Connector met with the Woodville Skate Park committee to help progress their project. The team offered guidance on working with neighbours, developing a resource consent (drawing on the Bush Multisports Wheel Park process), and connecting with designers. The committee is now working closely with J-Stone, who has come on board and completed the designs.

ACTIVE RECREATION AND COMMUNITY EVENTS CREATE SOCIAL OPPORTUNITIES AND CONTRIBUTE TO HAUORA.

Green Prescription Evolving to Better Support Tararua Participants

Sport Tararua is currently reviewing and refining the Green Prescription (GRx) programme to ensure it continues to meet the needs of participants across the district.

This includes exploring the addition of a new class in Pahiātua to complement the existing offering in Dannevirke, as well as adjusting class times to make it easier for more people to attend. While attendance has remained steady, these updates aim to improve accessibility and increase engagement ensuring more people can benefit from the support and motivation GRx provides.

Celebrating Our Local Champions During Volunteers Week

As part of National Volunteer Week (Te Wiki Tūao ā-Motu, 16–20 June), Sport Tararua celebrated the incredible people who give their time, energy, and heart to keep sport and recreation thriving across the Tararua District.

Throughout the week, five nominated volunteers were recognised in daily prize draws: Brooke Algie, Brenda McGregor, Shannen Simpson, Lynda Balfour, and Parehūia Kopua-Lawson each receiving a \$50 New World voucher. A \$100 club prize was also awarded to Puketoi Junior Rugby Club in recognition of their ongoing contribution to the community.

A huge thank you to all our volunteers—you're the backbone of our sporting communities and we're grateful for everything you do.

Tararua Youth Put Their Hands Up to Lead

Two Tararua rangatahi, supported by the Community Connector, have applied to join the new Sport Manawātū Youth Advisory Panel. Both have been selected for interviews in July.

The panel gives youth aged 12–24 a chance to influence funding decisions, help design programmes, and shape the future of sport and recreation in the region, while developing leadership skills along the way.

SECTOR UPDATES: LEADERSHIP AND STRATEGY

Sport and Recreation awards

Sport Manawātū in partnership with Te Pae Oranga o Ruahine o Taranua were the successful winners of the Jim Maniapoto Memorial Taonga-Excellence in Impacting Māori participation as Māori Award at the recent New Zealand Sport and Recreation award 2025.

Our partnership with Te Pae Oranga o Ruahine o Taranua through the He Oranga Poutama Māori Activation fund is all about strengthening wellbeing through Kaupapa Māori physical activity and connection.



Partnerships In Action event

This event was held to showcase the impact and achievements of Sport Manawātū and partners over the past 12 months. Hosted in the JA Russell lounge at the Arena in Palmerston North, it highlighted how funding has been effectively used to support participation, inclusion, and wellbeing through play, active recreation, and sport across the region.

We demonstrated our reach into diverse communities via trusted partnerships and emphasised our role in empowering local organisations, advocating for sector growth, and fostering lifelong engagement in active lifestyles.

Mayor Tracey was part of a panel of Mayors across the Rohe talking about the uniqueness of Taranua and celebrating the success of play, rec and sport in the Taranua region.





SECTOR UPDATES: TRENDS

Source: Disruptor Scan May 2025, Sport New Zealand.

Sport NZ's quarterly scan highlights potential disruptors to sport and recreation over the next two to five years. It serves as a tool for discussions on their implications and whether adjustments to current approaches are needed. The following disruptors have been identified as potentially relevant to TDC.

TECHNOLOGICAL

Artificial Intelligence

The NZ government has released a framework for the use of AI in the public service, based on OECD principles. Agentic AI, which perform tasks rather than just create content or respond to queries are becoming more popular, but there is great uncertainty about how firms can use them to add real value. There are growing calls to protect human creativity as a "natural resource" in the face of growing use of AI. The increasing use of AI by students could lead to many graduates being essentially illiterate and unable to think critically. AI is also anticipated to replace traditional search engines, posing a significant threat to Google's core business and revenue source.

RELEVANCE: AI could improve how councils deliver services (e.g. customer support, planning tools, data analysis), making operations more efficient with limited staff.

Active Transport

Waka Kotahi is developing an "Evidence Pack" to develop a better understanding of the transport network, including challenges, potential solutions, and their effectiveness. Cycleways are likely to be a contentious point of debate during some Council elections later this year. Potential candidates have already indicated they favour removing some existing bike ways and hating further developments where vehicles and parking are to be reduced.

RELEVANCE: Growing polarisation on transport safety measures suggest that partnering to strengthen community engagement to balance the needs of motorists, cyclists, and pedestrians while ensuring equitable transport investment could be an area of focus in 2025/26 planning.

ENVIRONMENTAL

SECTOR

Athlete and participant wellbeing

Recent months have seen heightened risks to athlete and participant wellbeing in New Zealand, with the launch of the controversial Runit Championship League, rising concussion claims among youth, and growing restrictions on transgender participation in sport. Social media-driven trends are also increasing unprepared backcountry hiking incidents. These developments, alongside neuroscientist warnings about new high-impact sports, highlight escalating concerns for safety, inclusion, and health across both traditional and emerging sporting activities.

RELEVANCE: Increased backcountry use, especially by unprepared participants, raises the need for clear signage, safety education, and collaboration with outdoor providers to prevent harm. This may be something that needs to be looked into as part of Asset management planning.

Workforce (including volunteers)

Between 2022 and March 2025, over 1,100 incorporated community sport organisations in New Zealand were dissolved by the Registrar of Incorporated Societies. New reporting requirements under the revised Incorporated Societies Act may make it harder to recruit and retain volunteers, as increased administrative demands deter people from taking on committee and governance roles. This legislative change, combined with ongoing workforce challenges, could significantly impact the sustainability and operation of sport and recreation organisations, including their reliance on volunteers.

RELEVANCE: For our district, this could mean fewer local sport opportunities, more club closures, and added pressure on Council facilities and funding issues

SECTOR

GREEN PRESCRIPTION

Referral information

Jan – Jun Referrals

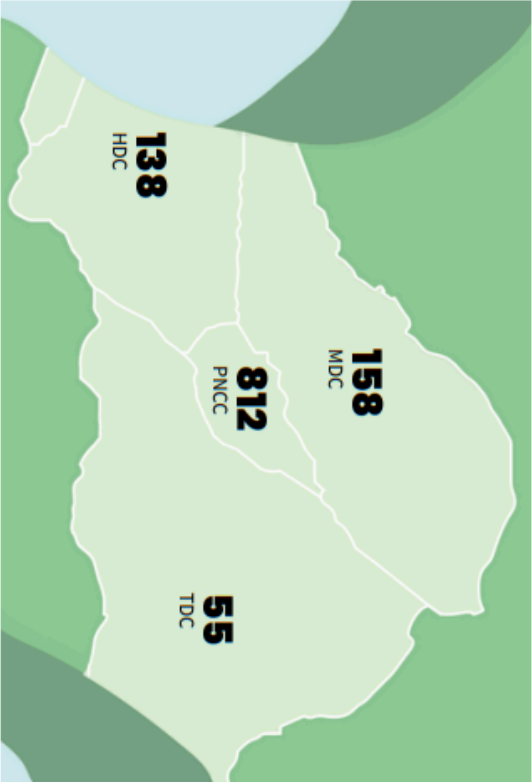


Total Referrals – Jul 24–Jun 25

Total Referrals by Region
Jul 2024 – Jun 2025



Referrals by Region
Jan – Jun 2025





CONTACT US

Tararua District Council,
26 Gordon Street,
Dannevirke 4942

P 06 374 4989

E info@sportmanawatu.org.nz

W sportmanawatu.org.nz



Report

Date : 1 August 2025

To : Chairperson and Committee Members
Community Development and Wellbeing Committee

From : Allie Dunn
Manager - Democracy Services

Subject : **Bush Multisports Trust Annual Report 2025**

Item No : **7.2**

1. Recommendation

- 1.1 *That the report from the Manager - Democracy Services dated 24 July 2025 concerning the Bush Multisports Trust Annual Report 2025 be received.*
- 1.2 *That the Annual Report from the Bush Multisports Trust for the period 1 July 2024 to 30 June 2025 be received.*

2. Reason for the Report

- 2.1 To present for consideration the Bush Multisports Trust Annual Report for the period ending 30 June 2025, as required by the Bush Multisports Trust and Tararua District Council contract.

3. Background

- 3.1 The Bush Multisport Trust board was established in 2000 to enable the growth of sport and recreation in the Tararua district, as well as to meet the changing needs of the local community of Pahiatua. The Trust operates the Bush Multisports Park on behalf of the Tararua District Council.
- 3.2 The Trust through the Bush Multisport Trust Facility Manager are tasked with maintaining and enhancing the facilities of the park and increasing its usage through various initiatives. The Trust's activities are supported through its partnership with Sport Manawātū and the Tararua Community Connector.

- 3.3 The contract requires that Bush Multisport Trust deliver six-monthly and annual reports to reflect progress made against the Contracted Key Result Areas for the Tararua District Council. The Annual Report for the previous financial year was received by the Community Development and Wellbeing Committee on 6 November 2024.
- 3.4 Bush Multisport Trust have delivered their Annual Report (attached) against the contract covering the period 1 July 2024 to 30 June 2025.
- 3.5 Representatives from the Bush Multisport Trust will be in attendance at this meeting to speak to their Annual Report.

4. Community Engagement

- 4.1 There are no community engagement requirements associated with this matter.

5. Statutory Requirements

- 5.1 There are no statutory requirements associated with this matter.

6. Delegations

- 6.1 The Community Development and Wellbeing Committee has authority to receive reports from the Bush Multisports Trust.

7. Conclusion

- 7.1 The Annual Report covering progress made against the Contracted Key Result Areas for the period ending 30 June 2025 is ready to be presented to the committee for receipt and noting.

Attachments

- 1 [!\[\]\(5abf6de2fcc9f2e6b9e4c3bc4b0ad74a_img.jpg\) BMST Annual Report to TDC 2025](#)



INTRODUCTION



The Bush Multisport Trust board was established in 2000 to enable the growth of sport and recreation in the Tararua district as well as to meet the changing needs of the local community of Pahiatua. The Trust operates the Bush Multisports Park on behalf of the Tararua District Council, this partnership being key in supporting annual operations.



Council's support allows the Trust to concentrate on facility improvements and encouraging recreational opportunities. All development work and smaller projects have been made possible by various funding grants and the generosity of our local community and businesses.



The Trust through the Bush Multisports Trust Facility Manager are tasked with maintaining and enhancing the facilities of the park and increasing its usage through various initiatives. The Trusts activities are supported through its long-standing partnership with Sport Manawatu and the Tararua Community Connector. This report details the progress including highlights made in the past 12-months against Bush Multisports Trust Contracted Key Results areas for the Tararua District Council. They include:



Maximise the number of sporting, non-sporting, and community activities at the Bush Multisports Trust Facility

Tararua 7 aside Competition

Tae Kwon Do programme

Te Kura Kaupapa – Hakinakina

Maintain and enhance the BMST Facility

Painting of upstairs lounge, reception and office

Grandstand seating refurbished from Woodville Stadium

Turf ongoing Maintenance

Dividing Curtain Beam (curtain to be installed in July)

Ensure Bush Multisports Trust is a financially sustainable organisation

Trust receiving \$185,592 from multiple funding entities including the below

\$118,105 from Tararua District Council

\$5,000 Trust House

\$7,500 from Bush Rugby Park Trust

\$10,000 from Tararua District Council (towards Dividing Curtain)



FACILITY UTILISATION

► *The Trust's strategic outcome is to maximise the number of sporting, non-sporting, and community activities at Bush Multisports facilities. This outcome is indicated by increases in facility use within the following users' categories.*

► *Major events for the year*

Pahiataua Duathlon

Sport Tararua with Pahiataua School hosted a Duathlon, which was to encourage tamariki and for whanau to participate in other activities. This event was originally to be held at Tararua College as a Triathlon, however with bad weather, was decided to host at BMST. Great community involvement. The event was supported well with over 50 tamariki taking part.

Kahui Ako Cultural Festival

The Annual Kahui Ako Cultural Festival has over 500 tamariki attend the REAP event. This is held around Matariki and is well supported by the wider Bush communities.

Pickleball Tournament

A user of the facilities, had started Pickleball in the stadium on a Thursday evening, with approx. 8 to 20 people attending regularly. They then hosted a lower north island tournament. Which saw teams coming from Gisborne, Hawkes Bay, Manawatu and Wellington. Approx 50 people were in the tournament. The stadium was a good set up for them and they could run 6 courts. This brought visitors into the community and they will be looking to host another tournament in the near future.



Month	Event	Month	Event
27th February	B&T Meeting	9-Jun	Property Blockers
2 nd March	Childrens Day	9-Jun	Explore Panakua
4 th March	Football for 4 weeks	10-Jun	Foreira Store Event
6 th March	Dance	17-Jun	Kanu Ako Cultural Festival
7 th March	Bush Wilton Sports	18-Jun	Kanu Ako Cultural Festival
8 th March	Basketball	25-Jun	Bush Principals
10 th March	Property Blockers Regional Meeting		
12 th March	Property Blockers Day		
13 th March	Ngati Aotearoa Whanau Voice workshop		
18 th March	Baker AG Vets shop		
22 nd March	Birthday Party		
26 th March	Bush Principals		
28 th March	FORO vs DEM Masterton		
29 th March	Birthday Party		
30 th March	Football Tournament		
3 rd April	TC Longest Day		
3 rd April	Dance		
8 th April	Hippo Flight Tournament		
9 th April	Dunblon - Sport Tararua		
13 th April	Birthday Lunch		
16 th April	Baker AG		
26 th April	Birthday Party		
27 th April	Basketball		
28 th April	Primary TTO		
30 th April	Hakamaia		
4 th May	Birthday Party		
7 th May	Kanu Ako		
7 th May	Football		
14 th May	Dart Tiz		
16 th May	Foreira		
16 th May	St Andrews Running Race		
18 th May	Birthday Party		
20 th May	Baker AG Vets shop		
21 st May	Baker AG Vets shop		
22 nd May	St Andrews Running Race		
23 rd May	Panakua Running Race		
24 th May	Bush Club Day		
25 th May	Basketball Tournament		
26 th May	Beer and Lamb		
28 th May	Football		
29 th May	Football		
6-Jun	Basketball Group		
6-Jun	Property Blockers		
6-Jun	Property Blockers		
7-Jun	Birthday Party		



BUSH
MULTISPORTS

FACILITY HIREAGE

Bush Multisport Trust Annual Utilisation Hours		
Facility	2023/24	2024/25
Grounds	1312	1455.50
Stadium Lounge	851	1502
Main Stadium - 2 Courts	2540.50	2271.50
Turf Pavilion	1029.50	1472.50
Turf	362.50	301.00
TotalHours	6095.50	7002.50

We have had an increase in 1000 hours approx. in the 12 month period. This has shown an increase mainly in corporate bookings in the upstairs lounge and the space of the turf pavilion being booked every day with health and wellbeing bookings, for example Yoga, Pilates Taekwondo and Self defence classes.



OVERVIEW

Corporate / Hire

Baker AG-

Baker AG have been holding monthly workshops, with a group of local farmers. These have been greatly attended and also utilising local caterers with these workshops.

Worksmat -

3 week bookings, where they provide courses to get people ready for the workforce

Primary ITO -

Primary ITO regularly book the upstairs lounge for night training sessions with their local participants to support in their course work.

ANZ/RABOBANK/ALLIANCE/FONTERRA/PROPERTY BROKERS -

Rural Organisations, regularly use the facilities as a centre point for meetings, team workshops and other events

KAHUI AKO -

The Bush Kahui Ako regularly use the facilities for meetings with Bush Principals and SLT

Habitat Health -

Utilisation of room booking, for physio and hand specialist physio throughout the year.

Many more corporate and hires book the facilities as seen on the utilisation records



OVERVIEW

►School Groups

We continue to have growth in the utilisation of our facilities. Taranua College ran their school athletics here in February. Which has continued to grow our relationship with the college and community. They are also utilizing the field space and lights for a football teams practice. The CACTUS programme over 8 weeks utilises the facilities with over 20 students in the course. This continues to be an awesome experience for them and to be situated around the community.

School Netball (Indoor and Outdoor), Hockey (Indoor and Outdoor), Basketball, Touch all continue to do well however due to economic challenges we have seen this to be a potential barrier for some.

Bush Primary Schools Minor Sports Day is another successful day on our calendar, with the Bush Primary Schools being able to partake in activities, ran by St Anthony's senior students.

Bush Primary Schools Athletics, While St Anthony's, Pahiatua School, and Small Schools all host their own Athletics Days here. They come together in Term 4 for a Bush Athletics Day, including Eketchahuna. Last year, the event was delayed with the weather, we were able to start later in the day. A great day with over 250 tamaki competing in the event.

►New Hirer

We have had new long term hirer's join us this year.

Taekwondo, Kickfit and Womens Self Defence

Brianna Martin, Brianna has run several different classes over the year. Including Children and Womens Kickfit, Self defence and Tae Kwon Do. All are regular classes with good numbers. Brianna also won the Community Active Recreation & Play Initiative of the Year at the Taranua Sports Awards. Brianna has had around 40 tamaki attend her taekwondo and Kickfit classes and 10 women attend her self defence classes.

Reformer Pilates is in the Turf Pavilion. This again bringing more health and wellbeing activities to our community. She has between 10 to 15 clients and is looking to increase this in the near future.

►Regular Bookings

All Bush Affiliated codes have had similar numbers of participants. All affiliated codes utilising all of Bush Multisports facilities. Which is identified later in the report.

Girl Guides have disestablished so the turf downstairs is now being utilised for 2meke after school care and holiday programmes. This increasing our utilisation for more bookings in the Turf Pavilion.



OVERVIEW

Tararua Seven's Tournament

Tararua Seven Aside tournament was held on August 7th 2024. The day was very successful.

We are always appreciated of our growing number of volunteer officials from Tararua College and Dannevirke High School. Between them they officiate over 240 games, so we would not be able to do this without their help. A donation is given back to the two schools for their contribution.

The tournament was run by Raylene Treder (Sport Manawatu) and Bexx Brown from Bush Multisport. A thank you to the rest of the Sport Manawatu team that came and helped also.

Results from the day.

Senior Rugby	Senior Netball	Senior Hockey	Senior Football
1st - St Josphe's	Dannevirke South	St Anthony's	Huia Range
2nd - Huia Range	Huia Range	Pahiatua	Pahiatua
3rd - Pahiatua	Pahiatua	Combined Schools (Mangatainoka, Ballance, Pongaroa, Makuri, Alfredton)	St Anthony's
Junior Rugby	Junior Netball	Junior Hockey	Junior Football
1st - Eketahuna	St Joseph's	St Anthony's	Woodville
2nd - St Joseph's	Huia Range	St Joseph's	Ruahine
3rd - Pahiatua	Eketahuna	Ruahine &	Pahiatua



OVERVIEW

► Bush Athletics

BMST now run the Bush Athletics, which is aimed at 3 to 13 year olds over a 6 week timeframe over Term 4. The aim of this is to engage more tamariki into participating in activities. There was a small \$10 charge for the 6 weeks and athletics modules were ran by Tararua College students and supervised both by the Sport Tararua Community Connector and BMST staff. We had over 70 children engaged in this. Bush Athletics was also a finalist in the Community Active Recreation & Play Initiative of the Year at the Tararua Sports Awards.

► Bush Multisports Club Day

This year saw all Bush Junior Rugby teams, Bush Senior Rugby, Pahiatua Junior Football, Pahiatua Senior Football and Bush Senior Hockey Women (Bush Senior Men played Friday night) with all playing at Bush Multisport on the 24th May. Bush Senior Rugby provided a sausage and drink to all junior rugby and football players. Sponsors and supporters were all there on the day. Great turnout throughout the day with over 1000 throughout the whole day.



MEMBERSHIP AND PARTICIPATION STATISTICS

Highlighted below is a table which captures a snapshot of "WHAT'S HAPPENING WEEKLY AT BUSH MULTISPORTS PARK" posted on the Bush Multisports Facebook page every Monday. Thanks to the weekly post, the Bush Multisports office have received calls or Facebook messages from members in the community wanting to join activities as they did not realise, they were available.

Images: Example of a Summer vs Winter Term, winter term is booked to capacity after 3pm

What is Happening at Bush Multisports Park the Week of the 2nd of December					
	Activity	Start	Finish	Cost	Where
Monday	Junior Athletics	3:30	4:30		Grounds
	Circuit Class	5:15	6:30		Stadium
	Pilates - Jess	6:30	7:30		Turf Pavilion
	Twilight Cricket	5:30	8:00		Grounds
Tuesday	Pilates - Jill	5:00	6:00		Turf Pavilion
	Yoga - Emma	6:00	7:00		Turf Pavilion
	Junior Summer Hockey	3:00	5:30		Turf
	Senior Summer social Hockey	5:30	7:00		Turf
	Twilight Cricket	5:30	8:00		Grounds
Wednesday	Bridge	7:00	9:30		Lounge
	Kickfit - Brianna	6:00	7:00		Turf Pavilion
	Twilight Cricket	5:30	8:00		Grounds
Thursday	Pilates - Jess	7:00	8:00		Turf Pavilion
	Circuit Class	5:15	6:30		Stadium
	Bush Junior Cricket Training	3:30	4:30		Grounds
Friday	Grassroots Play gym	9:00	11:00		Upstairs Lounge
Saturday	Junior Cricket	9:00	12:00		Grounds
	Notes				

What is Happening at Bush Multisports Park the Week of the 24th of March					
	Activity	Start	Finish	Cost	Where
Monday	Circuit Class	5:15	6:30		Stadium
	Pilates - Jess	6:30	7:30		Turf Pavilion
Tuesday	Pilates - Jill	5:00	6:00		Turf Pavilion
	Yoga - Emma	6:00	7:00		Stadium
	Pickleball	6:00	8:00		Grounds
	Senior Rugby training	6:00	8:00		Grounds
	Senior Hockey Training	6:30	8:00		Turf
	Senior Football Training	6:00	7:30		Grounds
Wednesday	Taekwon-Do - Brianna	5:00	7:00		Turf Pavilion
	Senior Netball Training	6:00	9:00		Stadium
	Bridge	7:00	9:30		Lounge
Thursday	Pilates - Jess	11:00	1:00		Turf Pavilion
	Circuit Class	5:15	6:30		Stadium
	Bush Junior Cricket Training	3:30	4:30		Grounds
	Senior Netball Training	6:30	9:00		Stadium
	Pilates - Jess	6:00	8:00		Turf Pavilion
	Senior Rugby Training	6:30	8:00		Grounds
Friday	Grassroots Play gym	9:00	11:00		Upstairs Lounge
	Primary school touch	3:00	5:30		Grounds
	Taekwon-Do	6:00	7:00		Turf Pavilion
Saturday	Junior Cricket	9:00	12:00		Grounds
	Notes				
Friday	FOBO vs Marist Masterton	18:30			Grounds

JUNIOR PARTICIPATION

Bush Multisport Trust - Participation Statistics			
JUNIOR ACTIVITY	2023-24	2024-25	
THLETICS - Junior	56	68	
ADMINITON - Junior	0	0	
ASKETBALL - Under 13	20	0	
ASKETBALL - Junior	113	98	
ACTUS - Tararua College	24	24	
IRCUIT CLASS	10	10	
RICKET - Junior	17	30	
RICKET - Smashplay	15	12	
OTBALL - Pahiatua Football Club	81	80	
OTBALL - Tararua College	18	0	
RASS ROOTS GYM - Pre School	30	30	
UIDES - Pippins/Brownies/Guides	4	0	
OCKEY - Bush Junior Club (Outdoor)	44	54	
OCKEY - Tararua College	30	31	
OCKEY - Junior (Indoor)	133	139	
OCKEY - Junior (Summer)	270	245	
ETBALL - Bush Primary	194	197	
UGBY - Bush Junior Club	122	115	
AEKWONDO & SELF DEFENCE	0	40	
UCH - Junior	255	330	
J Meke Kidz	60	60	
Totals	1506	1563	

SENIOR PARTICIPATION

Bush Multisport Trust - Participation Statistics			
SENIOR ACTIVITY	2023-24	2024-25	
BADMINTON - Social	0	0	
BASKETBALL - Social	90	0	
BRIDGE	10	12	
CRICKET - Twilight Social	150	150	
CIRCUIT CLASS	35	35	
FOOTBALL - Pahiatua Football Club	20	18	
GYM - Pahiatua Training & Fitness Club	300	300	
HOCKEY - Social (Indoor)	0	0	
HOCKEY - Twilight (Outdoor)	77	87	
HOCKEY - Bush	67	49	
MARCHING TEAM	9	0	
NETBALL - Bush Senior	50	47	
NETBALL - Eketahuna Senior	9	0	
NETBALL - Social	50	80	
PICKLEBALL	0	20	
PILATES	20	40	
RUGBY - Bush Senior Club	63	74	
SPIN	0	0	
TAEKWONDO & SELF DEFENCE	0	10	
YOGA	10	10	
Totals	950	922	



MAINTAIN AND ENHANCE THE BMST FACILITIES

BMST strategy is to maintain and enhance the BMS facility. This is achieved by the quarterly review of an ongoing maintenance plan.

Facility Development

The Dividing Curtain Project – Beam has been installed and Dividing Curtain will be installed in July 2025.

Painting – Of the BMST Upstairs lounge, Office and Reception areas has been completed.

Future Projects for the Trust

The Turf is at its end of life. We have been gathering case studies on different options for the upgrade of the turf. We would need the assistance of Council and Funding opportunities to progress in this in the near future.

ENHANCING SOCIAL MEDIA PRESENCE

► Emphasizing the power of connection and community through the power of social media.



ENSURE BUSH MULTISPORTS TRUST IS A FINANCIALLY SUSTAINABLE ORGANISATION

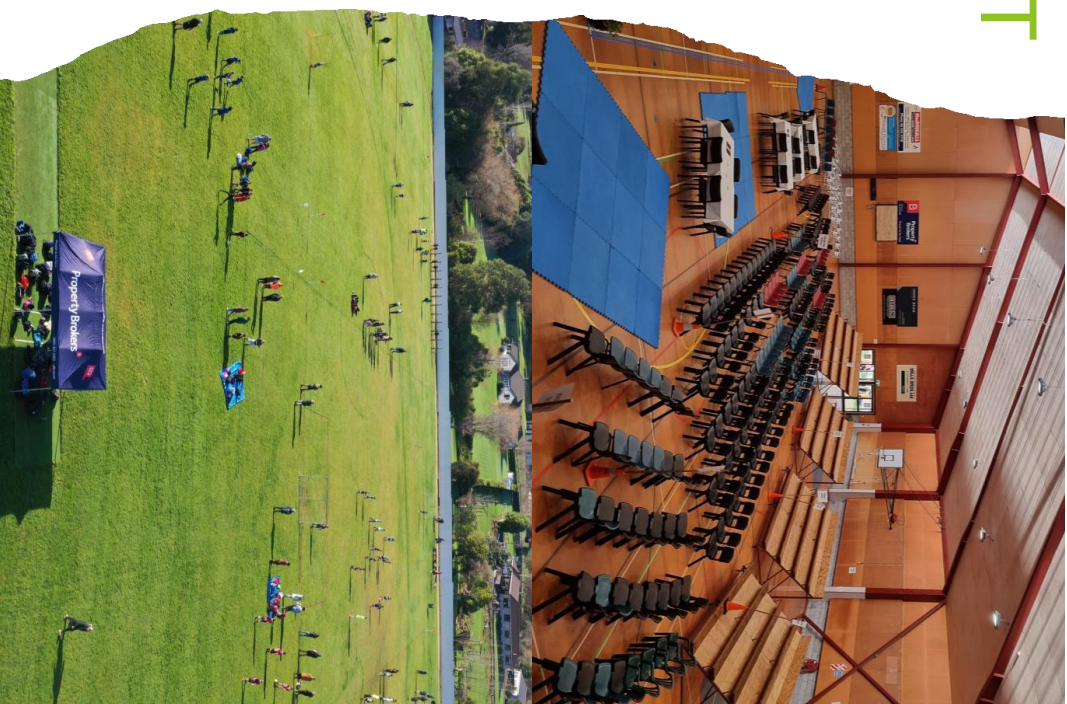
BMST objective is to ensure that the Trust is a financially sustainable organisation. All funding applications and future facility requirements are planned in a coordinated way to maximise to best result for the Trust.

The BMST is committed to achieving financial sustainability, recognising the challenges posed by the current funding climate. Our strategy focuses on maximising the effectiveness of our funding applications while enhancing our facility offerings to attract diverse revenue streams.

We would like to express our sincere gratitude to the Taranua District Council for their ongoing support. Their contributions play a crucial role in enabling the Trust to meet its objectives and maintain operational effectiveness. This partnership is vital as we navigate an increasingly competitive funding landscape.

The current economic environment presents challenges for securing funding and sponsorship. Many traditional sources have become more competitive, requiring us to adopt innovative approaches to attract financial support. Despite these difficulties, we remain proactive in seeking funding opportunities, exploring grants, sponsorships, and community partnerships.

This year we have gained some new sponsorship in the stadium and we are working on some tangible sponsorships with our businesses in our community.



KEY INITIATIVES

At Bush Multisport Trust (BMST), we are committed to strengthening our financial sustainability in ways that directly benefit our local community. Our recent initiatives have been guided by a focus on inclusivity, access, and long-term service to the people of our district.

▶ 1. Community-Aligned Funding Applications

We have streamlined our funding application processes to better align with the Trust's strategic direction and community priorities. By coordinating these efforts, we increase our ability to secure support for initiatives that deliver meaningful outcomes for our whānau, clubs, and wider community.

▶ 2. Facility Access and Activation

By optimising the use of our upstairs stadium and turf pavilion, we have expanded access to a broader range of events and activities. While corporate bookings have grown, these spaces are also increasingly being used for community events, school activities, and local sports gatherings—ensuring our facilities remain hubs of local connection and participation.

▶ 3. Diversifying Income Through Community-Led Use

To strengthen our financial foundation, we are continuing to diversify revenue streams. This includes fostering local partnerships, hosting grassroots sports leagues, and enabling more community-driven events. These efforts not only support sustainability but also ensure that BMST remains a vibrant, welcoming space for all.

▶ 4. Growing Local Partnerships

We are increasing outreach to local businesses and organisations to build mutually beneficial partnerships. These collaborations help fund and support community access, ensuring we can offer more affordable opportunities and inclusive programming.

BMST is grateful for the continued support of the Tararua District Council and acknowledges the vital role this partnership plays in helping us grow. Through thoughtful planning and strong community connections, we aim to build a resilient and accessible facility that continues to serve the people of our district now and into the future.



SUPPLIER RELATIONSHIPS AND PERFORMANCE

- ▶ At Bush Multisport Trust (BMST), we value our suppliers as essential partners in delivering quality services to our community. Over the past year, we have continued to strengthen these relationships, with notable improvements in communication, responsiveness, and alignment of goals.
- ▶ Regular engagement through meetings and open dialogue has proven effective in addressing concerns promptly and ensuring shared understanding across all parties. This collaborative approach supports efficient service delivery and promotes mutual accountability.
- ▶ Engaging multiple suppliers has allowed BMST to diversify our procurement channels, mitigate risks, and increase flexibility in operations. This strategy continues to enhance our ability to adapt to changing needs and maintain service quality.
- ▶ Recent staff changes within some supplier organisations have led to renewed energy and engagement. New personnel have demonstrated a proactive approach, contributing to improved clarity, faster issue resolution, and stronger working relationships.
- ▶ Looking ahead, BMST remains committed to fostering innovation and efficiency through ongoing collaboration with our suppliers. By maintaining strong, transparent partnerships, we aim to build a resilient supply chain that underpins our operational goals and long-term sustainability.



BMST TRUST AND OPERATIONAL STAFF

- ▶ The BMST Board remains committed to going above and beyond to ensure that our strategic aims and objectives are consistently met. Our Board consists of Jared Brock (chair), Raylene Treder, Erica Gleeson, Bridget Bailey, Derek Cumming, Matt Anderson, Kate Steminger, Stan Wolland and Warrick Greaves. All bringing a wealth of knowledge, expertise and commitment to the BMST.
- ▶ Bexx Brown Facility Manager; with her extensive knowledge and strong connections within the sports and community sector, supported by her governance roles at Tararua College and the Manawatu Rugby Board are continuing to be invaluable assets to our organisation. Bexx has completed her First Aid training with Meditrain.
- ▶ Angela Gardner continues to provide essential administrative support, while Tim Sorenson, Hayden Brass, and Alan Duckett effectively fulfill their caretaker responsibilities. Together, this dedicated team is focused on driving the Trust's mission forward and enhancing our community and the facilities.



THANK YOU
STARAPARIA DISTRICT COUNCIL

For all your support to Bush Multisport Trust and
helping continue to grow our facilities for our
community



Report

Date : 1 August 2025
To : Chairperson and Committee Members
Community Development and Wellbeing Committee
From : Kawtar Tani
Group Manager - Strategy and Community Wellbeing
Subject : **Management Report**
Item No : **7.3**

1. Recommendation

- 1.1 *That the report from the Group Manager - Strategy and Community Wellbeing dated 02 July 2025 concerning the Management Report be received.*

2. Reason for the Report

- 2.1 This report is to update the Community Development and Wellbeing Committee on key activities and items of interest over the period since the last report to the committee.
- 2.2 Report attached are:
- 2.2.1 Communications Management Report
 - 2.2.2 Facilities Management Report
 - 2.2.3 Customer Engagement Management Report

Attachments

1. [Community Development and Wellbeing Committee - Communications 15 Apr - 15 Jun 2025](#)

2. [Download](#). Community Development and Wellbeing Committee Management Report - Facilities June - July 2025
3. [Download](#). Community Development and Wellbeing Management Report - Customer Engagement - July 2025

Strategic Priority	Interactive Council	
Status Report	Communications	
	Reporting period	15 Apr – 15 Jun 2025
	Activity Group Manager	Kawtar Tani
	Presented By	Karsten van der Oord

Activity status					
Red: Roadblocks present	Overall	Staffing	H&S	Levels of service	Budget
Orange: Potential risks					
Green: on track					
Communications Activities					

Activity progress in reporting period
<p>Consultations / Engagement</p> <p>The following public engagement activities were conducted. This includes communications planning, material development, FAQ development, consultation/engagement promotion, website development, managing the consultation period including feedback responses and media enquiries.</p> <ul style="list-style-type: none"> • Annual Plan 2025/26 • Local Water Done Well • Freedom Camping Bylaw • Reserve Management Plan • Communications Survey • Draft Urban Enhancement Strategy 2025 – 2050 • Cemeteries Satisfaction Survey
<p>Campaigns</p> <p>The following campaigns were planned, developed, promoted, and conducted, mostly using Bush Telegraph, the TDC Facebook page, website, and radio. In some cases, extra digital geo-targeting was done:</p> <ul style="list-style-type: none"> • Te ahu a Turanga – Manawatū-Tararua highway (Love Tararua/Love the Highway) • 2025 Local Elections campaign • Local Elections Pre-Election Report

<ul style="list-style-type: none"> • Anzac Day promotion of events • Anzac Day Civic Service (Communications Team member as TDC guest speaker) • Top tips for exploring the Tararua District over Easter • Myth busting presentation in the council chambers • Preferred Dog Ownership • Dog registration • Dog Fees & Charges • Instalment 4 rates reminders • Universal water meters • Integration of Services • Direct Debit – Update on Rates Rebates comms • Internal campaign to promote use of GetHomeSafe app • Relocation of Visitor Information Services (Dannevirke) • Antenno posters • District-wide Contestable Fund • Public Education (Video Series with Waste-Ed) re Kerbside Recycling Contamination • Norsewood Flushing Programme • Host a Facebook Live for Candidate Information Session in Dannevirke • Matariki Celebrations (including fireworks safety for pets)
<p>Projects / Others</p> <ul style="list-style-type: none"> • Compilation and graphic design of Tararua District Fast Facts • Inventory of Digital Spaces equipment, development of instruction manuals • Administration of the Manawatu-Wanganui Civil Defence & Emergency Management Facebook page • Finetuning of the Social Media Rules of Engagement • Implementing an alternative live stream system for Candidate Information Session • Health and Safety Brochures for Contractors and Transfer Stations • Piki Te Ora Health Expo –promotion for enrolling for election and communications survey • Strategic Framework Infographic • TDC website – updates and new information pages were added
<p>Priorities in upcoming reporting period</p>
<ul style="list-style-type: none"> • Local Elections Run phase – nominations open for candidates • Analysis of the 2025 Communications Survey, development of action plan • Further comms planning for Integration of Services and Rationalisation of buildings

Key risks
<ul style="list-style-type: none"> • Increasingly community commentary ahead of elections <i>Mitigation:</i> Ongoing monitoring; moderation on Council channels guided by our Rules of Engagement • Misinformation, particularly around water services <i>Mitigation:</i> Responding promptly where appropriate to correct the record

Health and Safety
Nothing significant to report

Key performance indicators
<p>An increase in Council digital platform traffic</p> <ul style="list-style-type: none"> • Facebook Followers: 6,904 (previous reporting period 6,664 - up 240) • TDC website visitors: 15,615 (previous reporting period 17,800 – down 2,185) <p>An increase in the number of submissions/feedback forms received:</p> <ul style="list-style-type: none"> • AP 2025/26 submissions: 40 (2024/25: 45; 2023/24: 136) • LTP 2024/34 Submissions: 502 (2021/31: 70) • Super Consultation 2022 Round 1 Submissions: 173; Round 2: 48 <p>An increase in the number of Annual Communication Survey respondents. Target 200.</p> <ul style="list-style-type: none"> • 2025 Communications Survey : 154 respondents (2024: 149 respondents).

Trends
<ul style="list-style-type: none"> • Election-related comments are beginning to increase on our Council's Facebook page and website. + • Increasing social media engagement on our page • "Grafitti/vandalism" continues to be a hot report topic on Antenno <p>Trend statistics</p>

Websites:

Chart 1: Total number of visitors (by IP address) to our websites



Facebook Statistics:

Overview:

Activity remains high on our Facebook page with:

- 240 new followers taking us to 6,904 – see chart 2

Chart 2: Total of TDC Facebook followers throughout reporting periods

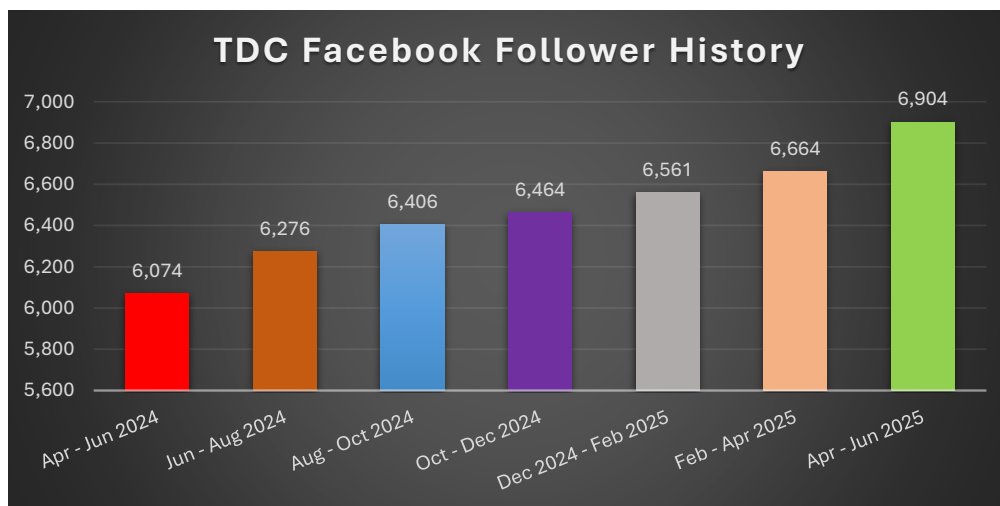
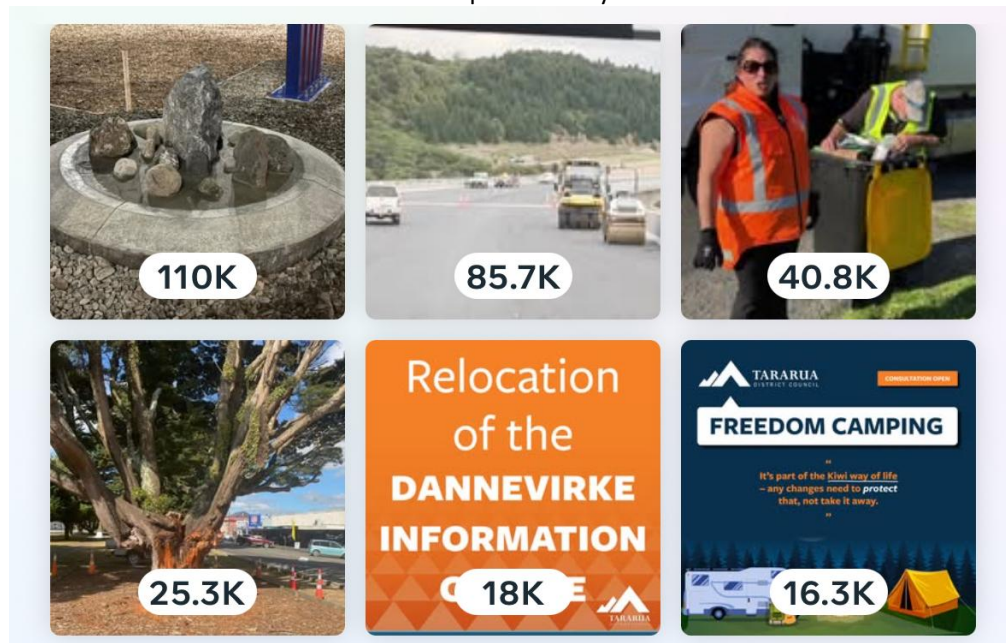


Chart 4: Top content by views



Media enquiries

11 Media enquiries about:

Upcoming plans for gorge road

Build-up of slash at Wainui bridge - Herbertville

Cutting down of native tree in Pongaroa

Dannevirke Information Centre

Freedom Camping Bylaw

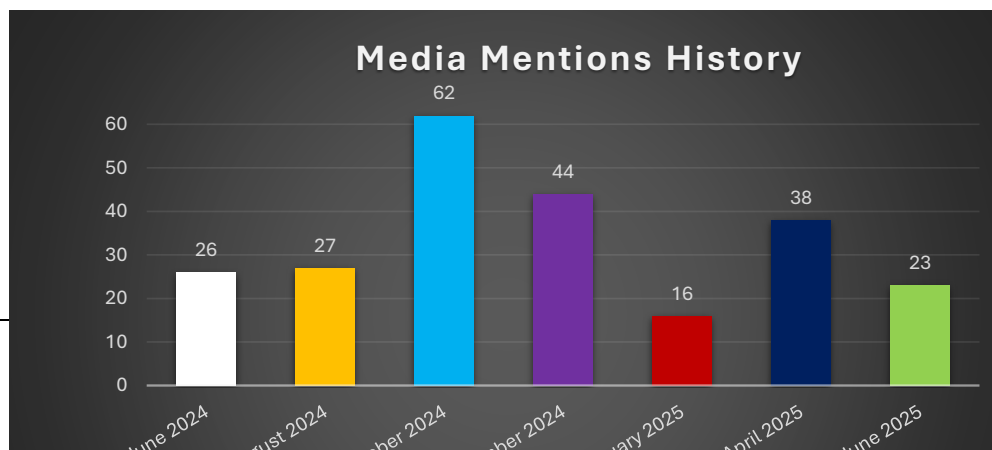
Route 52 APŌPŌ Award

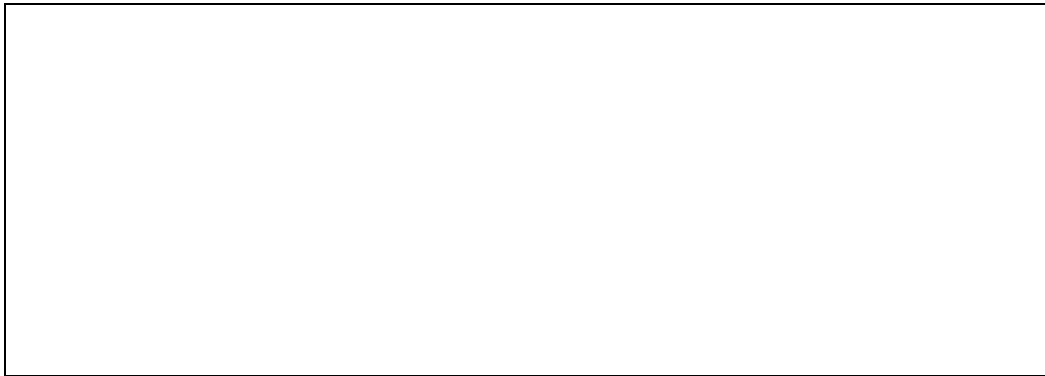
Contaminated Recycling x 3 Dog Fees and Charges in the Tararua District

Te Ahu a Turanga Manawatū-Tararua Highway

23 Media Mentions: Mainstream media and blogs concerning Tararua District Council – see chart 7*

Chart 7: Media Mentions captured over the reporting period





Strategic Priority	Connected Communities	
Status Report	Community Facilities	
	Reporting period	June – July 2025
	Activity Group Manager	Hamish Featonby
	Presented By	Fontayne Chase

1

Activity status					
Red: Roadblocks present Orange: Potential risks Green: on track	Overall	Staffing	H&S	Levels of service	Budget
Cemeteries (N= 23)					
Community Buildings (N= 37)			meterboards		
Parks and Reserves (N= 94)					
Pensioner Housing (N= 85)					
Public Conveniences (N= 21)					
Swimming Pools (N= 3)					
Camping Grounds (N=4)					
Commercial Property & Aerodrome					

Activity progress in reporting period
<p>Cemeteries:</p> <ul style="list-style-type: none"> Digitisation Project: Nearing completion, the data correction has been carried out and the final tweaks being put onto Local Maps layers, with the aim to have this mapping available on the TDC Cemetery Record Search, for public use. Godfrey Monument Restoration: The restoration of the historic Godfrey Monument at Mangatainoka was recently completed under the management of the NZ Master Monumental Mason Association. The project was fully funded by the Association, with further conservation work approved and supported by its National Office. Mangatera cemetery, Great War section collaboration project with Veterans Affairs is near completion.

- Property:
- Draft Lease is currently being negotiated between WAFC and TDC for the lease of Hockey Park.
- Woodville Cemetery reserve Lease is due for renewal in the coming months. Deed of Lease will be reviewed.
- Newman Domain – Parcel 2, Domain Board have expressed the desire to continue with the current Lessee. Right of Renewal will be discussed with Lessee.

Aerodrome:

- Drone flights within 4km of the Dannevirke Aerodrome have been on the rise. Such flights require written permission from the Aerodrome Manager and the potential issue of a Notice to Airmen (NOTAM) dependant on the flight, requiring more officer input.

Community Buildings:

- Online booking system for bookable spaces and assets has progressed to procurement.

Parks and Reserves:

- Installation of new swing set at Fountain Square has suffered delays impacted by weather and theft of materials.
- At the previous Committee meeting further information regarding a TDC Tree Asset register was requested to identify the difference between the Significant Tree Register in the District Plan and what was proposed.
- Council's District Plan includes a register of Significant Trees which are protected under the RMA and a specific process is undertaken before trees are added to the register. Maintenance including removal of trees listed on the Significant Tree register may require a Resource Consent.
- The Facilities team considers a TDC Tree Register, policy and Tree Asset Management Plan to be an essential tool that will:
 - Acknowledge both the benefits of trees and the challenges raised by them in making decisions about their management
 - Ensure planning for managing trees on parks, reserves, road reserves, cemeteries and other actively managed land throughout Tararua enables long-term benefits to the community
 - Provide a consistent approach for making day to day decisions about management of Council owned trees
 - Ensure active succession planting for future proofing
 - Ensure reliable data on Council owned trees is retained to enable safe, sustainable and cost-effective management.
-

- The approach aims to establish a comprehensive inventory of tree assets across the district enabling better planning, prioritisation and resource allocations. This initiative will support safer public spaces, healthier urban ecosystems and more efficient use of council resources.

Pensioner Housing:

- 100% occupancy as 31 July.
- Vacancy during the reporting period

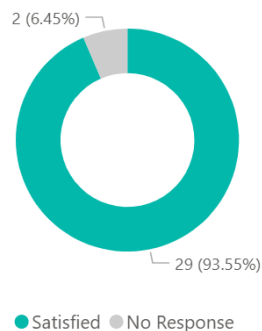
1 Bedroom Unit	5 days vacant	Lost Revenue \$135
----------------	---------------	--------------------

- 100% Annual Tenancy inspections were completed as at 10 June.
- Staff completed property condition assessments. One property in Dannevirke was identified for full refurbishment.
- All units meet healthy homes standard as of 1 July 2025.
- Current waiting list across the district is 20 local, four underage of 65 and six out of town.
- Four new housing applications were received during this reporting period.

Campgrounds:

- Campgrounds recorded 1,133 overnight stays in June 2025, slightly up from 1,015 in June 2024.
- QR Codes responses from Anzac and Matthew Park and Woodville Campground showing satisfaction levels from visitors.

Overall Satisfaction



Priorities in upcoming reporting period

Cemeteries:

- Finalising GIS mapping project

- On going tree maintenance

Pensioner Housing:

- Implementation of new property management software – MRI Palace and Tenancy Practice Services.

Playground Equipment:

- Installation of new swing set at Fountaine Square

Parks & Reserves:

- Reserve Management Plan adoption

Community facilities:

- Meterboard upgrades project

Pools:

- Complete draft Asset Management Plan and Asset Register
- Schedule preventative maintenance of outdoor pool pumps and filters
- Prep for Poolsafe visits to outdoor pools in conjunction with operators
- All outdoor pools, including Pahiatua, are scheduled to open for this summer, maintaining commitments to expected levels of service.

Key risks

Cemeteries:

- Continued safety assessment and maintenance of trees in cemeteries posing a risk to visitors and or headstones

Community Buildings:

- Community facility meter boards have been inspected by Blue Current as part of their Smart meter upgrades. Inspections have identified owner obligations to make safe the meter boards prior to Smart meter installation. Works are scheduled to be carried out before December.

Parks and Reserves:

- Managing tree maintenance work within current budgets

Campground:

- Erosion monitoring at Dannevirke Holiday Park

Aerodrome:

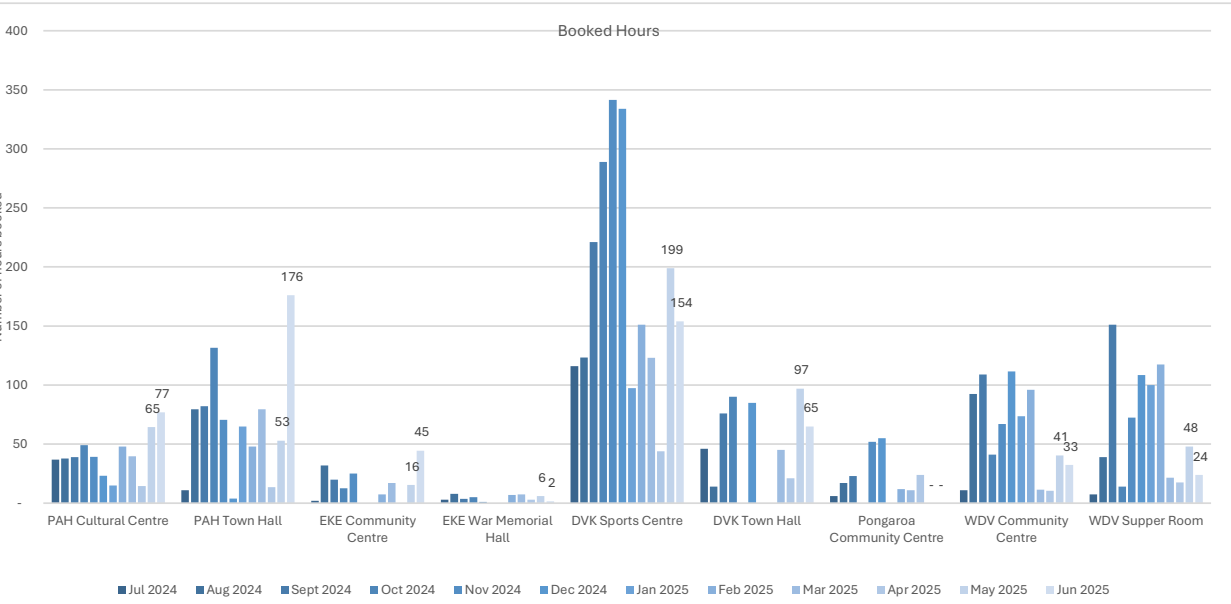
- Aerodrome users have been managing the rabbit population. Due to a significant rabbit warren on the northwestern edge of Runway 20, an excavator was brought in to cave the warren and re-level the ground.

Health and Safety

- Recommendation received from Blue Current smart metering service to investigate upgrade of Dannevirke Town Hall meter board. Other meter boards have been identified and works to be programmed for completion.

Key performance indicators

Facility booking hours:



Community Buildings

- Dannevirke Host Lions held their final book sale at the Town Hall
- Increased usage at Pahiatua Town Hall contributed by the bookings for the Tararua Dance School
- Increase usage at Eketahuna Community Centre contributed by numerous private events and Badminton.
- Woodville facilities show consist bookings in comparison to the same report period last year.

• Sports grounds:



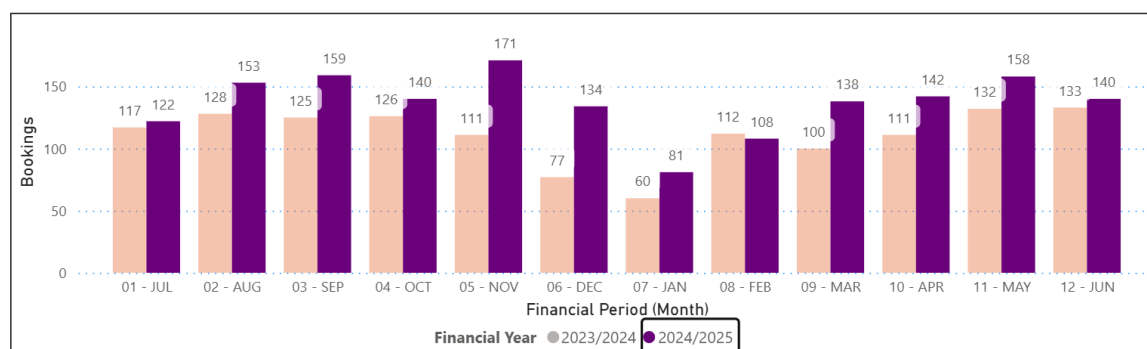
Key Insights

- No winter sports played at Coronation Park this season. JAB have moved to rugby park.
- Football clubs are the main users in Dannevirke Domain and Woodville Rec Grounds.
- There was a decrease of approximately 12.85% in the number of hours booked in 2025 compared to last year.

Trends

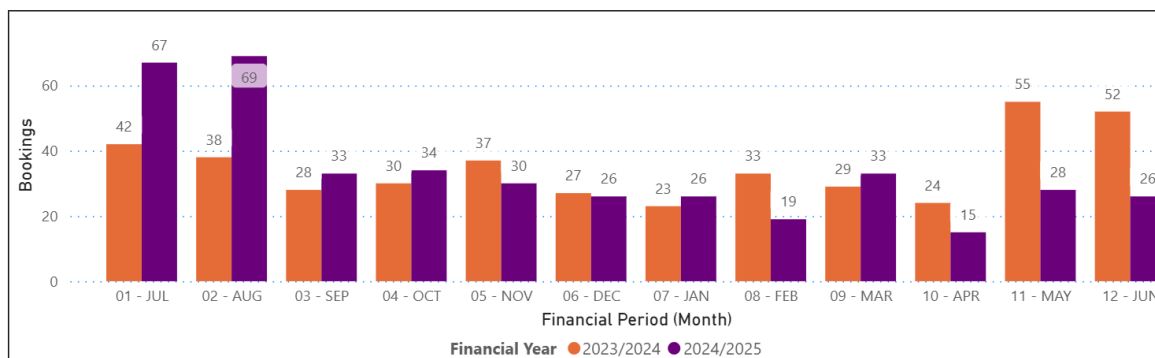
Facility Bookings

Community Buildings annual usage comparison

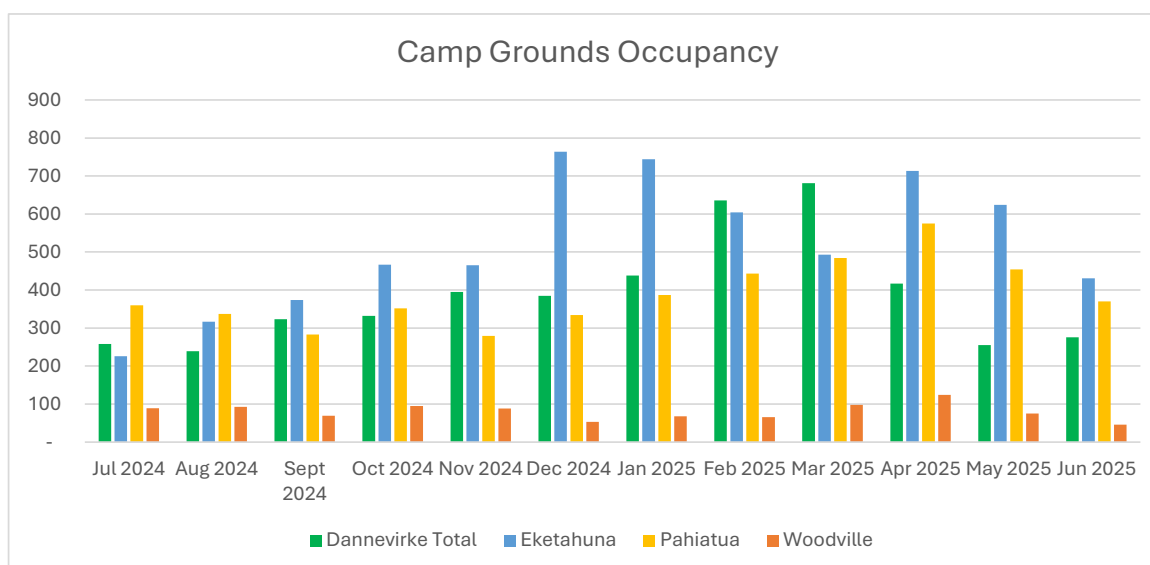


- Key Insights:
 - Cancellations slightly decreased from 9 to 7.
 - Community Building bookings achieved an annual increase by 20% more hours used compared with last year's total.

Sports grounds annual usage comparison



Campgrounds



- Total Campground visits increased by 466 in 2024/2025, rising from 16,013 in 2023/2024 to 20,583.
- Eketahuna remains the most visited campground
- Woodville continues to have the lowest usage

S17 a Review Update

Swimming Pools

Stage One:

SLA requirements reviewed – Outdoor Pools

- Action: Service Level Agreements reviewed amended to include additional support from Council to ensure compliance.

Completed

<p>TDC to introduce an operations check/audit to ensure service remains compliant.</p> <ul style="list-style-type: none"> Action: Pool Safe audit scheduled for December. TDC to complete preseason audit mirroring PoolSafe audit. 	Completed
<p>TDC to connect with Wimbledon Memorial Baths Committee to discuss land use expectations.</p> <ul style="list-style-type: none"> Action: TDC asset Next Steps: Develop condition assessment and asset plan 	Completed
<p>TDC to propose a less restrictive approach to securing Depreciation Reserve funds for critical assets.</p> <ul style="list-style-type: none"> Action: TACT to complete Condition Assessment of their facility producing an Asset Plan Asset Plan will provide Council with the foresight required to schedule critical asset renewals and work with TACT to maintain Asset Register. 	Completed
<p>TDC to complete the recording of the outdoor pools assets in the RAMM system.</p> <ul style="list-style-type: none"> Action: New Asset Register produced with costings and life expectancy. Next Steps: Data to be loaded into RAMM. In conjunction with pool operators asset renewal plan to be developed for 2026 - 2028 	In Progress
<p>TDC to seek asset cost estimates and asset condition assessments to populate the Asset Management Planning function in RAMM</p> <ul style="list-style-type: none"> Condition assessment report completed with a draft AMP. Additional feedback from pool operators required to finalise the AMP. 	Completed
Stage Two:	
<p>TDC to formally confirm the land use arrangement with the Wimbledon Memorial Baths Committee.</p> <ul style="list-style-type: none"> Outcome: TDC Asset 	Complete
<p>Improve the measure of success of the facilities to be measurable of the SLA performance</p> <ul style="list-style-type: none"> Action: Monthly reporting templates utilised to capture admission data from 24/25 season to compare with the 25/26 season. Regular EHO visits are scheduled for preseason and monthly during operation. – <ul style="list-style-type: none"> Template design completed 	In Progress

<ul style="list-style-type: none"> • Next step: Develop Business plan in conjunction with pool operators. <ul style="list-style-type: none"> ○ Awaiting variation contracts to be signed 	
<p>TDC to work with TACT to develop the facility Asset Management Planning</p> <ul style="list-style-type: none"> • Action: proposal submitted to TACT in March to have an independent assessor complete condition assessment. TACT accepted proposal in May. Assessment date to be confirmed. 	Completed
<p>TDC to seek asset cost estimates and asset condition assessment to populate the Asset Management Planning function in RAMM for WaiSplash</p> <ul style="list-style-type: none"> • Action: In conjunction with TACT, TDC has arranged for the Condition Assessment to be completed by Amotto Consultants. The report will provide an Asset Register with estimated costing to contribute to the Asset Management Plan • Next Steps: TDC will support the administration of the Asset Register for WaiSplash and assist with development of maintenance planning. 	Completed
<p>TDC to initiate discussions with TACT regarding a change of focus to service delivery only and taking on Woodville Pools and divestment of asset management responsibility.</p> <ul style="list-style-type: none"> • Outcome from discussion. Not interested at this stage. 	Complete
<p>TDC to initiate discussion with BAT regarding the motivation to manage the new facility and Eketahuna Pools.</p> <ul style="list-style-type: none"> • Action: Nil. Project brief already indicated no desire to manage the new facility. 	Complete
<p>TDC and current outdoor pool operators agree to a year extension to the SLA term 30 June 2026.</p> <ul style="list-style-type: none"> • Contract variations signed <ul style="list-style-type: none"> ✓ Eketahuna Woodville • New Agreement for Wimbledon 	In progress
Stage Three:	
<p>TDC to monitor the SLA performance measures, supporting the operators to achieve them where appropriate. (All Pools)</p>	To be monitored

<ul style="list-style-type: none"> Action: TDC has engaged PoolSafe to support with compliance. Variation contract now includes an Accountability Schedule for transparency. <ul style="list-style-type: none"> ✓ Poolsafe registration completed ✓ Contract variation include clear accountabilities. 	
TDC to maintain and monitor the asset management actions and work with the operators for any asset works as required (All Pools)	Ongoing
TDC confirms or not the suitability of continuing aquatic service delivery under Option 1	Complete
TDC confirm or not the suitability of Option 2	Complete
Camping Grounds - Short Term	
Ensure TDC Omnibus Reserve Management Plan allows for camping activity on each of these sites	Complete
Conduct an updated asset data collection and valuation across all sites <ul style="list-style-type: none"> Woodville TDC assets Carnival Park, mix of TDC and Board assets Eketahuna Motor Camp, Infrastructure TDC owned, operational assets contractor owned assets. 	Completed
Reassess three sites (excluding Woodville) against the Camping Ground Regulations 1985	
<ul style="list-style-type: none"> Compliant camping ground plan/sites marked and labelled 	Completed
<ul style="list-style-type: none"> Non self-contained site within required proximity of ablutions Action: assessment completed. Non urgent amendments to be made at later date. Ie. Consider relocating Cabin at DHP or alternative solution	Completed
<ul style="list-style-type: none"> Occupancy data is accurately collected and reported as per the regulations Action: The team are investigating an online AIO package. <ul style="list-style-type: none"> Interim reporting template provided to operators 	Monitoring
Develop a policy on the maximum duration of stay and a stand-down period at all TDC owned camping grounds. Ensure all operators are required to comply <ul style="list-style-type: none"> Action: regulations applied. 	Not started
Develop a more comprehensive financial data collection/reporting system to account for operational and renewal expenditure	With Procurement

<ul style="list-style-type: none"> Action: online booking system due diligence in progress 	
<p>Work with all operators to encourage the development of online bookings and credit card pre-payment/security facilities in alignment with their accommodation inventory.</p> <ul style="list-style-type: none"> Action: investigations are ongoing to determine the most appropriate platform to implement for this activity. The team is considering a platform that will also support online bookings for bookable spaces. 	With Procurement
<p>Work with all operators to improve websites and online presences.</p> <ul style="list-style-type: none"> Action: Online platform will address this recommendation in due course. 	
<ul style="list-style-type: none"> Improve campground websites 	
<ul style="list-style-type: none"> Update TDC own website 	
Pahiatua Carnival Park – not legally incorporated	
<ul style="list-style-type: none"> Enter new operational service deliver agreement/licence for an agreed initial term of 14 months with right of renewal of 2+3 years 	Further investigation
<ul style="list-style-type: none"> Disclose to TDC daily occupancy and full financial information included in new service delivery agreement/licence. 	Monitoring
<ul style="list-style-type: none"> Discontinue to pay the management fee in exchange for Board retaining the visitor fee and allowance for the operator to remain in the onsite house under a legal tenancy agreement at peppercorn or low rent. 	Further investigation
Eketahuna Motor Camp	
<ul style="list-style-type: none"> TDC to work with the current operators to enter into a new licence agreement where maximum stays are enforced and daily occupancy and full financial information disclosed <ul style="list-style-type: none"> 	Developing
<ul style="list-style-type: none"> Agree an initial term of 14 months with negotiated renewal 	
Dannevirke Holiday Park	
<ul style="list-style-type: none"> Renew contract for a further 14 months with recommended variations 	Completed
<ul style="list-style-type: none"> Relocate the non-compliant basic A-Frame cabin <ul style="list-style-type: none"> Action: considering options for this asset. 	Not started
Woodville Campground	

<ul style="list-style-type: none"> • Council de-register the Woodville site as a camping ground and instead runs this facility in the immediate term as a self-contained overnight campground. • Action: Exemption Certification granted. 	Exemption received
<ul style="list-style-type: none"> • Update advertising and signage • Action: no changes required 	Complete
<ul style="list-style-type: none"> • Continue with iSite for reservations and payments Action: no changes made. Online platform being investigated. 	Complete
<ul style="list-style-type: none"> • Add rubbish disposal and promote local laundromat services Action: added to campground map plan 	Complete
<ul style="list-style-type: none"> • Engage contractors for daily security and cleaning checks Action: PPCS currently reporting via Antenno 	Monitoring
<ul style="list-style-type: none"> • Operate as self-contained only freedom (free) camping over the Christmas Shutdown period • Action: investigations into automated services 	In progress

Strategic Priority	Interactive Council, Connect Communities & Thriving District	
Status Report	Customer Engagement	
	Reporting period	May to June 2025
	Activity Group Manager	Sandy Lowe
	Presented By	Sandy Lowe

Activity status Red: Roadblocks present Orange: Potential risks Green: on track	Overall	Staffing	H&S	Levels of service	Budget
Customer Services					
Libraries					
Visitor Information					

Activity progress in reporting period
<ul style="list-style-type: none"> Integration of Customer, Library and Visitor Services implemented from 30 June 2025. Cross training of key personnel has begun prioritising our casual cover and Woodville staff. Dana Burnett was appointment to the newly created Customer Engagement Manager role. Ongoing support to the Revenue Team, with preparation underway for Rates Rebate processing, receipt of 2025–2026 first rates instalment, dog registrations, and transfer of Information Centre services (i-Ticket and Intercity sales). Library upgrades completed, including self-check machine installations in Pahiatua and Woodville, new shelving and signage at Dannevirke, fibre upgrade at Woodville, and APNK scanner secured for Pahiatua. 73 children and accompanying adults attended National Simultaneous Storytime in May; new picture books received for Dannevirke and Woodville collections. 43 Welcome Packs distributed (April–June 2025), including 12 to purchasers outside the district. iSite and Customer Services working effectively to maintain booking services; Woodville has seen an increase in enquiries about walk/cycle tracks, particularly the new shared user path along Te Ahu a Turanga: Manawatū Tararua Highway.

- Two new tourism accommodation businesses established in Woodville (Skyline Breeze BnB and The Rose), with marketing support provided.
- New Tararua Visitor Guide printed and in high demand; Tararua Map update planned to reflect new highway and Woodville subdivision.
- Creative Communities functions transitioning to Community Engagement.
- Early planning for the 2026 Tararua Golf Tournament underway.

Priorities in upcoming reporting period

- Customer Engagement Team
 - Upskilling and cross training across all sites
 - New services imbedded into day-to-day processes
 - Progress site integration at Woodville i-SITE, Library and Service Centre
- Project - Telecommunications and Contact Centre Solution
- Strengthening the Customer Engagement teams capability and capacity to enhance support to wider Council Services
- Fill the remaining vacancy, Customer Engagement Coordinator

Key risks

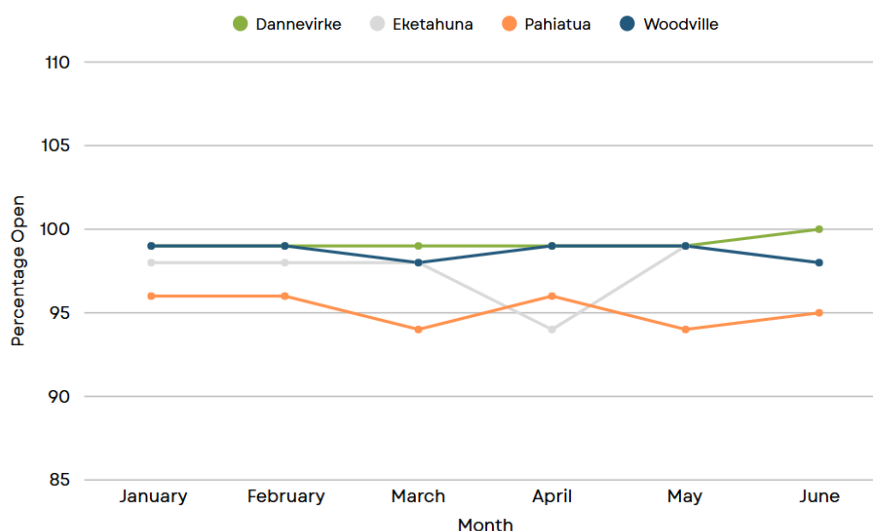
None to report

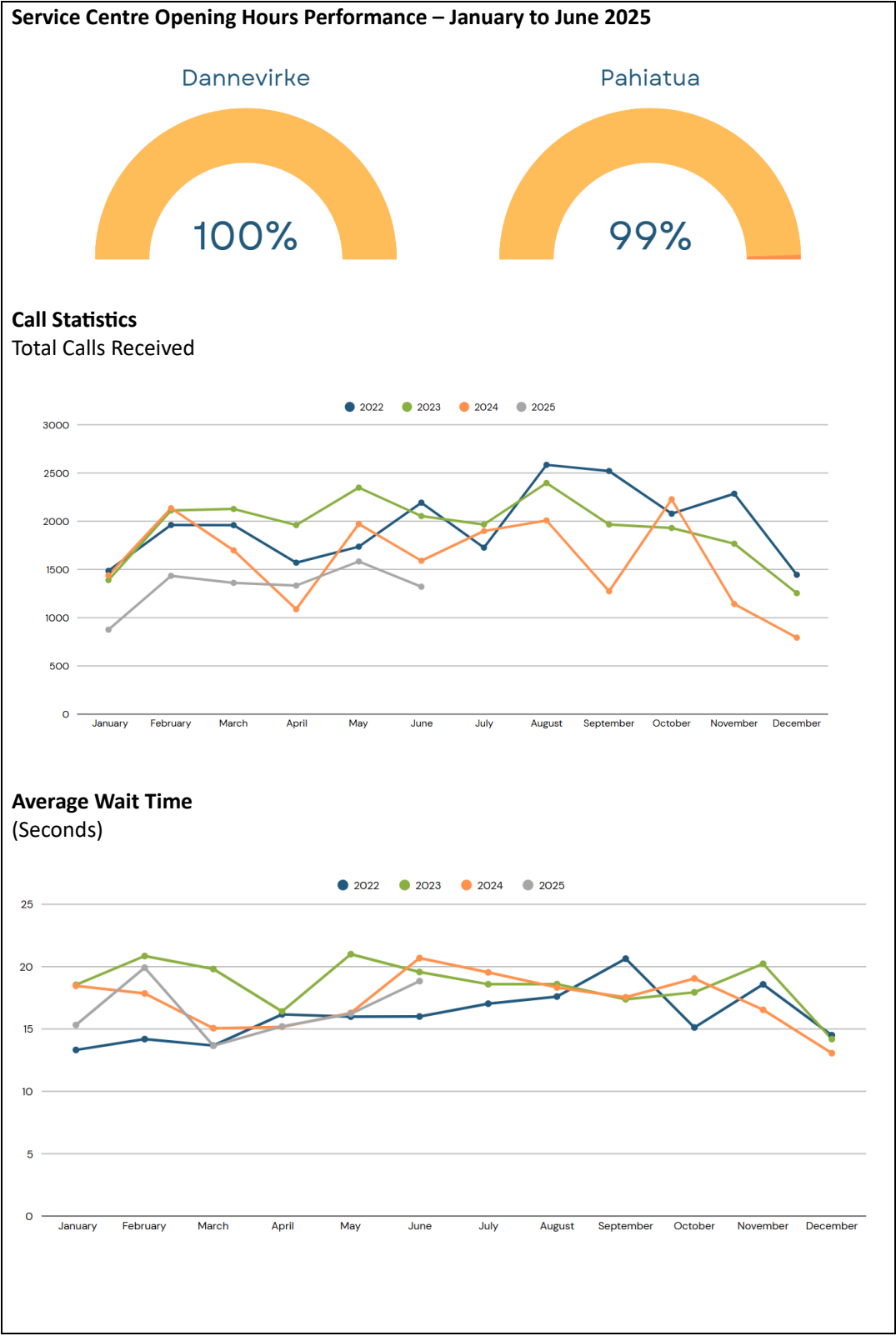
Health and Safety

None to report

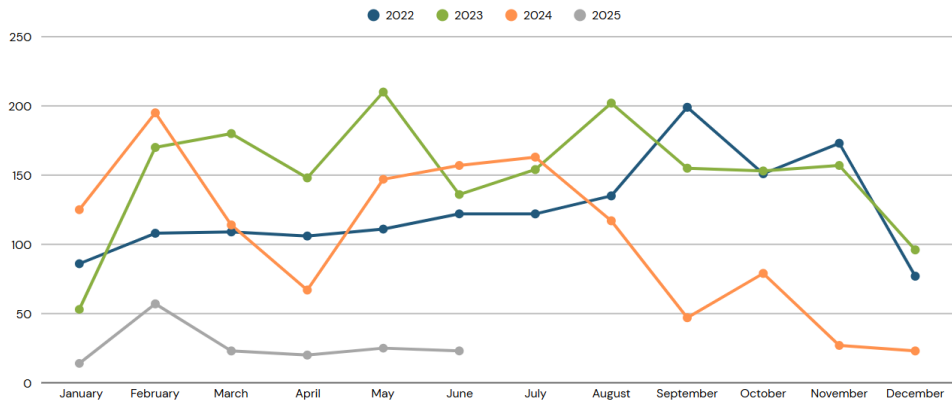
Key performance indicators

Libraries Opening Hours Performance – January to June 2025

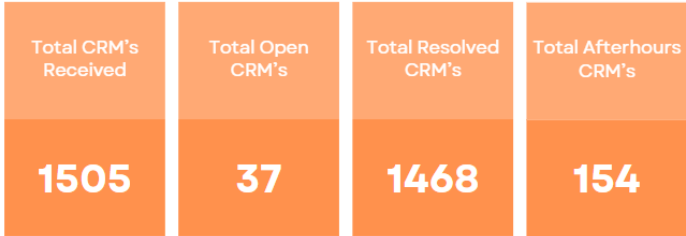




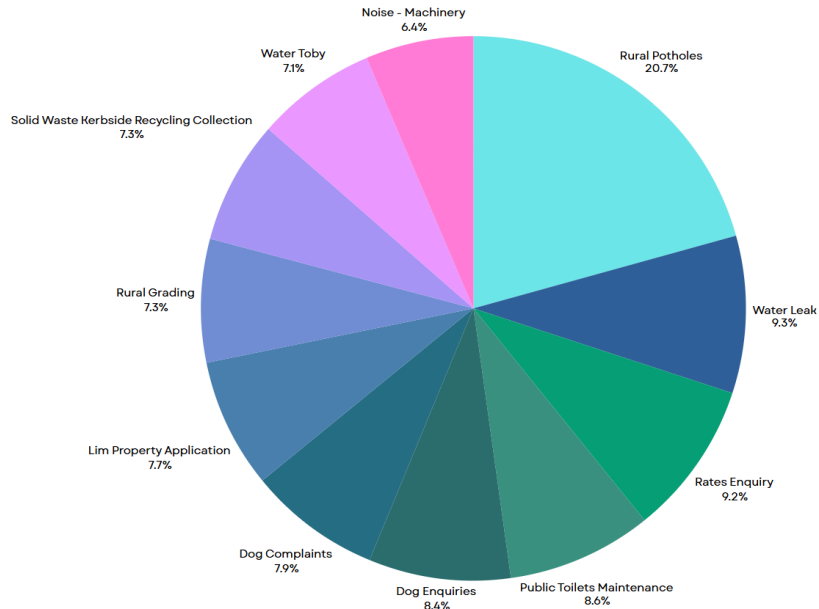
Abandoned Calls

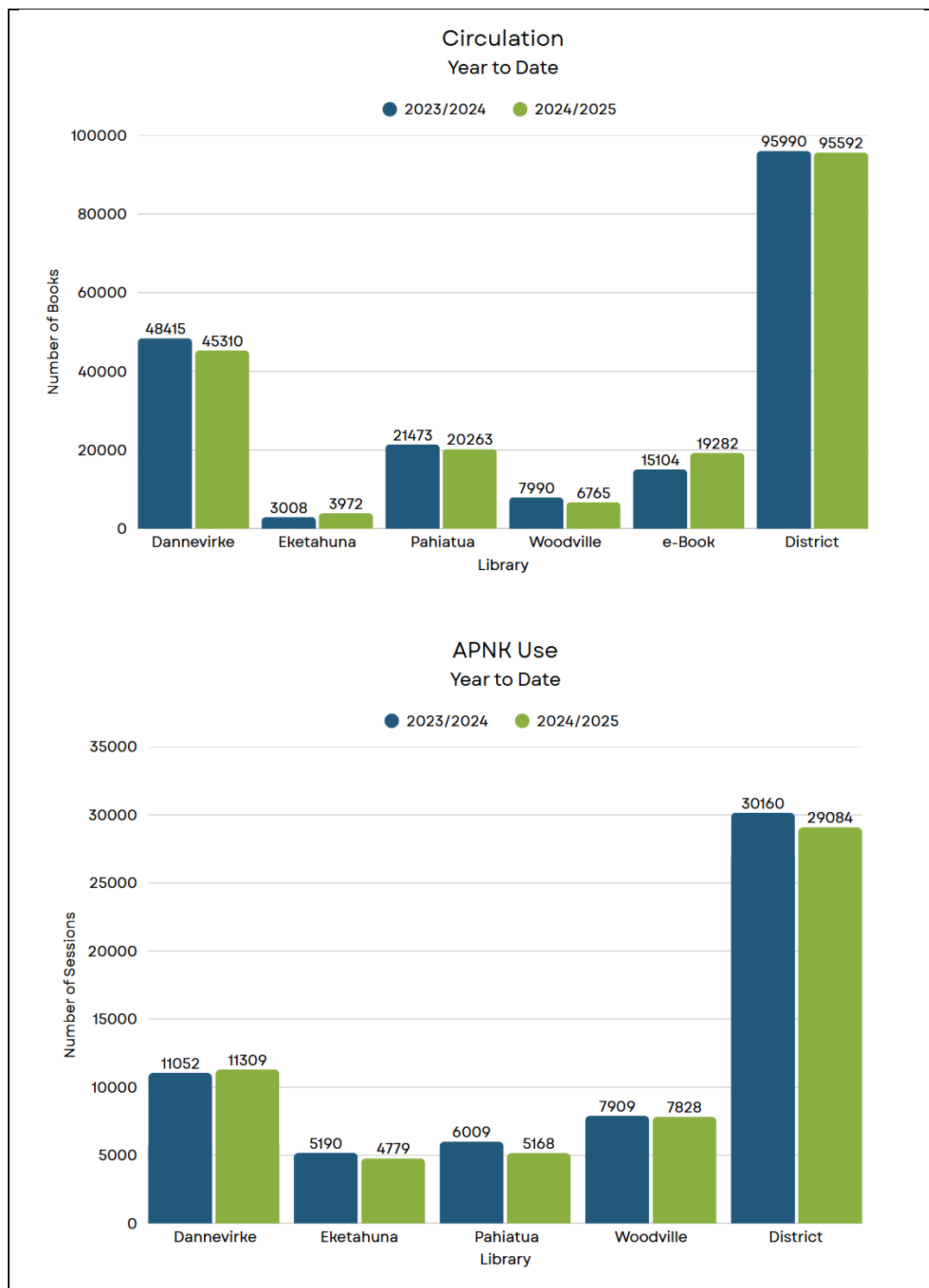


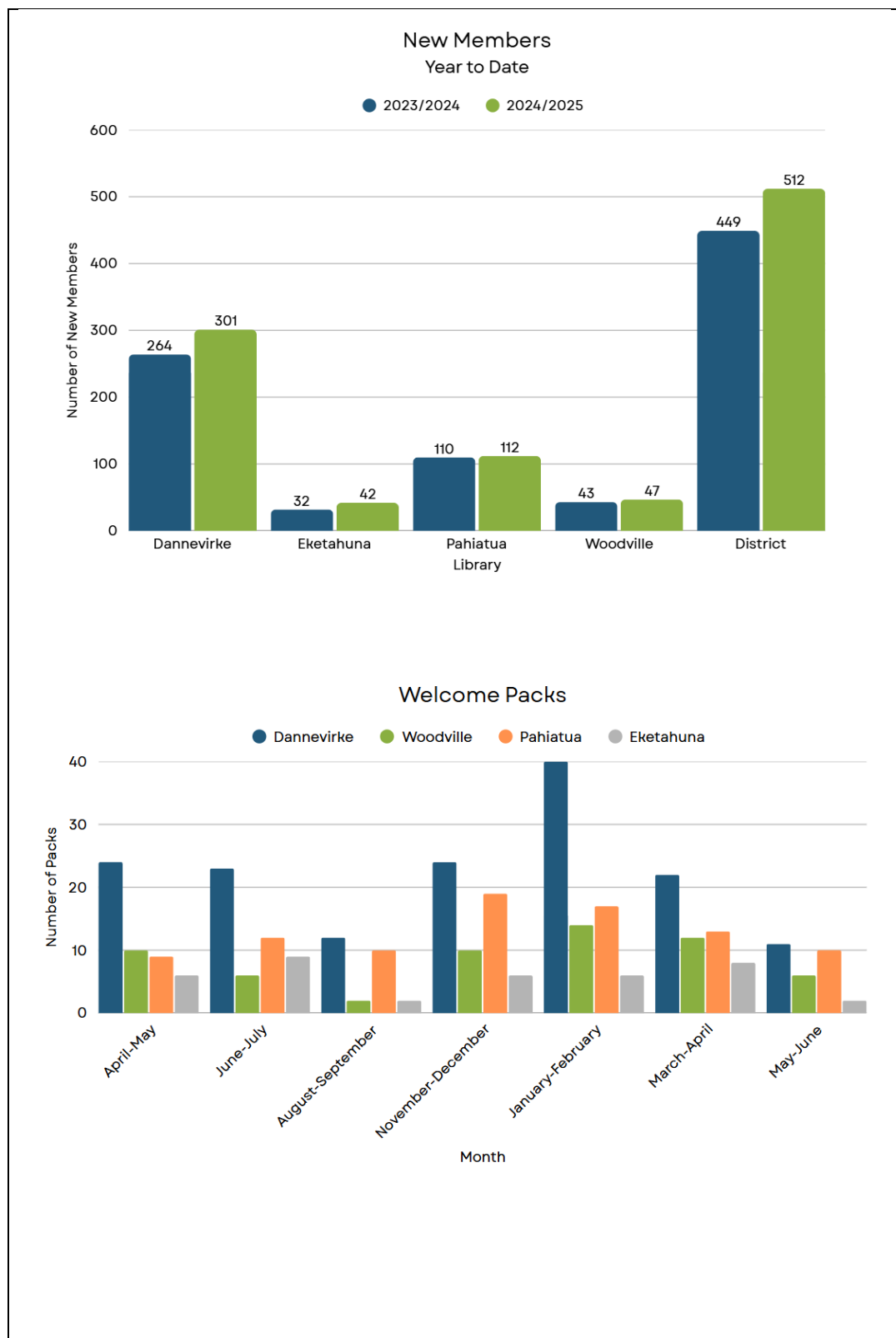
CRM Statistics

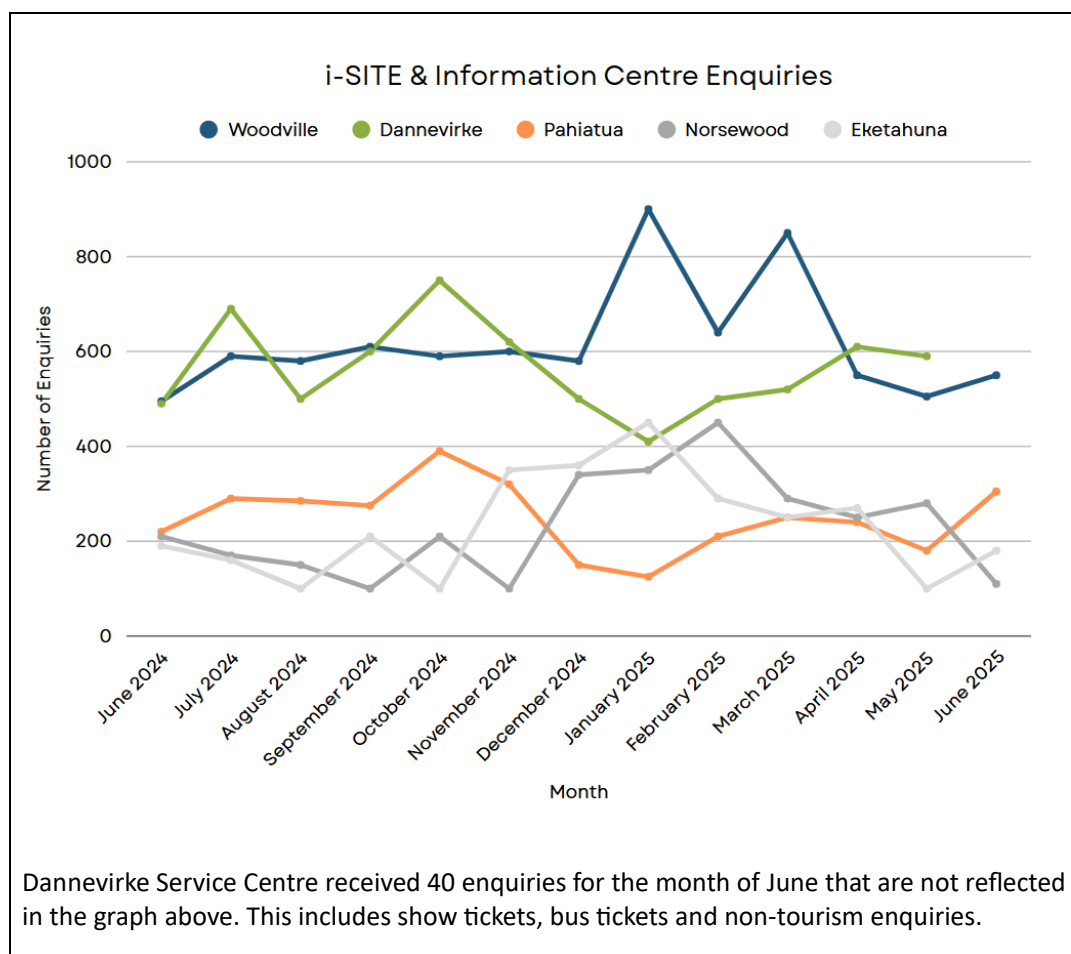


Top CRM Categories









Trends

We have seen a reduction in reported customer numbers following the move of Visitor Information from the Dannevirke Information Centre to the Dannevirke Customer Engagement team. We have been working on improving signage and released communications about this shift.

A reduction in received phone calls observed throughout the year is persisting. This has corresponded with improvement in our handling of abandoned calls and reduced wait times.